



# PARTS CATALOGUE

## AT115 (5MX3) INDONESIA

---



1B5MX-460E1

( )

AT115  
PARTS CATALOGUE  
©2003 by Yamaha Motor Co., Ltd.  
1st edition, June 2003  
All rights reserved.  
Any reprinting or unauthorized use  
without the written permission of  
Yamaha Motor Co., Ltd.  
is expressly prohibited.  
Printed in Japan.

## FOREWORD

This Parts Catalogue is related to the parts for the model(s) on the cover page. When you are ordering replacement parts, please refer to this Parts Catalogue and quote both part numbers and part names correctly.

1. Modifications or additions which have been made after the issue of the Parts Catalogue will be announced in the Parts News.  
It is advisable that you make the necessary corrections to the Parts Catalogue according to the Parts News.

2. Abbreviations

The following abbreviations are used in this Parts Catalogue.

“UR” Use specified parts number.

“UN” Use as many as needed.

“AP” Alternate Parts

“LM” Locally Made (Parts need to be ordered locally)

“F#” Frame No. (Applicable machine No.)

“O/S” Over Size

3. The number of components for assembly

- Parts, which are to be supplied in an assembly, are listed with a dot (.) in front of the part name as shown below.
- The numeral appearing to the right of each component part indicates the quantity of parts for each assembly unit.

PART NO.	DESCRIPTION	Q'TY	REMARKS
2F5-83310-60	FRONT FLASHER LIGHT ASSY	2	
115-83311-60	.BULB (6V-18W)	1	

4. Applicable colours of graphics are represented in the “REMARKS” as shown below.

PART NO.	DESCRIPTION	Q'TY	REMARKS
2N4-24110-00-X5	FUEL TANK COMP.	2	MXR
3J1-24240-10	.GRAPHIC, FUEL TANK	1	FOR MXR

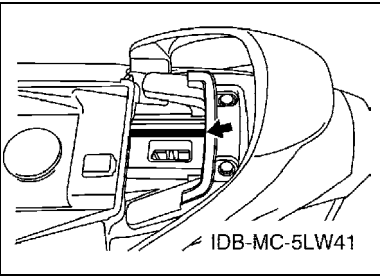
5. Note that the illustrations for reference in finding parts numbers are not to be used for assembling. When assembling, please use the applicable service manual.

6. The asterisk (\*) before a reference number indicates modified items after the first edition.

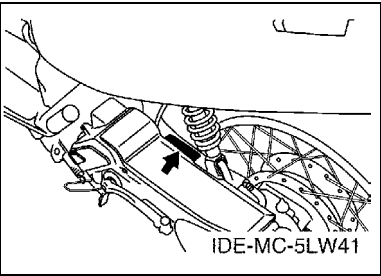
FOREWORD

7. Applicable Serial No.

Frame Serial No.



Engine Serial No.



8. Applicable Colour Code (The (\*) mark shows Model colour.)

Abbreviation	Colour Name	Colour Code
DGYM1(*)	DULL GREENISH YELLOW ME 1	0650
SL	SILVER	0035
VRC1(*)	VIVID RED COCKTAIL 1	0121
YB(*)	YAMAHA BLACK	0033

9. Applicable Starting Serial No.

Frame Serial No.

Serial No.	Name Of Q'ty Column	Model Code

Engine Serial No.

Serial No.	Name Of Q'ty Column	Model Code

# CONTENTS

## ENGINE

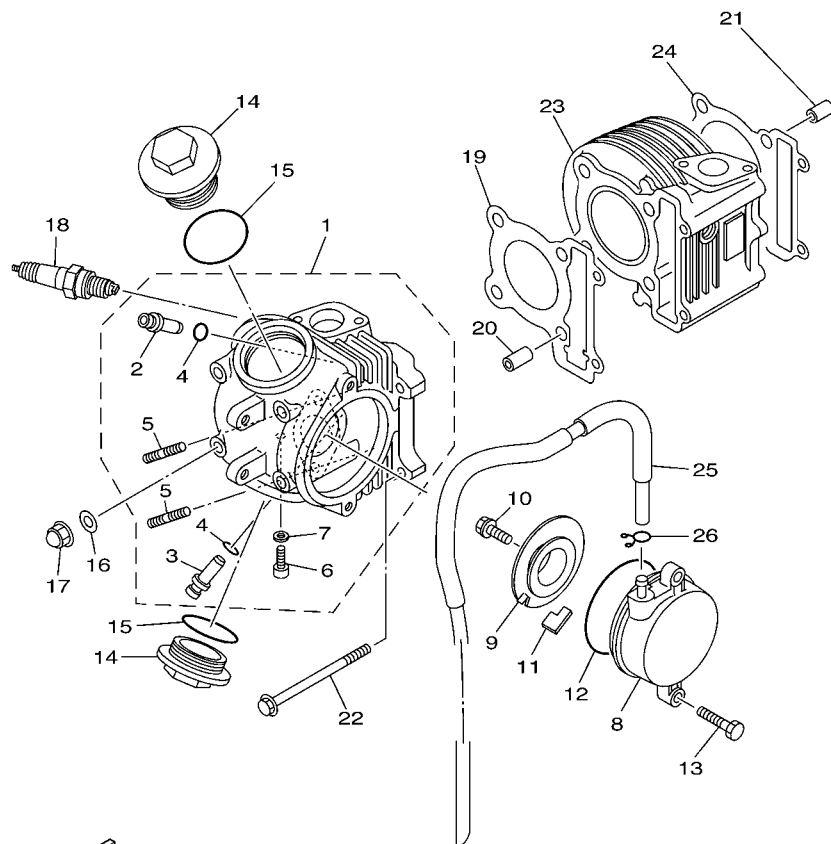
CYLINDER .....	1
CRANKSHAFT & PISTON .....	2
VALVE .....	3
CAMSHAFT & CHAIN .....	4
OIL PUMP .....	5
AIR SHROUD & FAN .....	6
INTAKE .....	7
CARBURETOR .....	8
EXHAUST .....	10
CRANKCASE .....	11
CRANKCASE COVER 1 .....	13
STARTER .....	15
CLUTCH .....	16
TRANSMISSION .....	18

## CHASSIS

FRAME .....	19
FENDER .....	20
SIDE COVER .....	21
REAR ARM & SUSPENSION .....	23
STEERING .....	24
FUEL TANK .....	26
SEAT .....	27
FRONT WHEEL .....	28
FRONT BRAKE CALIPER .....	29
REAR WHEEL .....	30
STEERING HANDLE & CABLE .....	31
FRONT MASTER CYLINDER .....	32
STAND & FOOTREST .....	33
LEG SHIELD .....	35
GENERATOR .....	37
STARTING MOTOR .....	38
METER .....	39
HEADLIGHT .....	40
TAILLIGHT .....	41
HANDLE SWITCH & LEVER .....	42
ELECTRICAL 1 .....	43
ELECTRICAL 2 .....	44

## INDEX

NUMERICAL INDEX .....	45
-----------------------	----



5LW4440-B010

FIG. 1 CYLINDER

REF. NO.	PART NO.	DESCRIPTION	5MX3				REMARKS
1	5LW-E1102-00	CYLINDER HEAD ASSY	1				
2	5LW-11133-10	.GUIDE, VALVE 1	1				
3	5LW-11134-10	.GUIDE, VALVE 2	1				
4	93210-09800	.O-RING	2				
5	90116-08806	.BOLT, STUD	2				
6	90153-06029	.SCREW, HEXAGON	1				
7	90430-06014	.GASKET	1				
8	5LW-E1185-00	COVER, CYLINDER HEAD SIDE 1	1				
9	5LW-E1165-00	PLATE, BREATHER	1				
10	5LW-E3185-00	BOLT, BREATHER	1				
11	5LW-E1155-00	SEAL, LABYRINTH	1				
12	93210-71462	O-RING	1				
13	91317-06020	BOLT	2				
14	4ST-E1186-00	COVER, CYLINDER HEAD SIDE 2	2				
15	93210-448G4	O-RING	2				
16	90201-08609	WASHER, PLATE	4				
17	90176-08026	NUT, CROWN	4				
18	94700-00846	PLUG, SPARK (NGK CR7HSA)	1				UR
	94700-00833	PLUG, SPARK (ND U22FSR-U)	1				UR
19	5LW-E1181-00	GASKET, CYLINDER HEAD 1	1				
20	99530-10114	PIN, DOWEL	2				
21	99530-10114	PIN, DOWEL	2				
22	95027-06100	BOLT, FLANGE	2				
23	5LW-E1310-00	CYLINDER	1				
24	5MX-E1351-00	GASKET, CYLINDER	1				
25	5LW-E4987-00	HOSE	1				
26	90467-09006	CLIP	1				



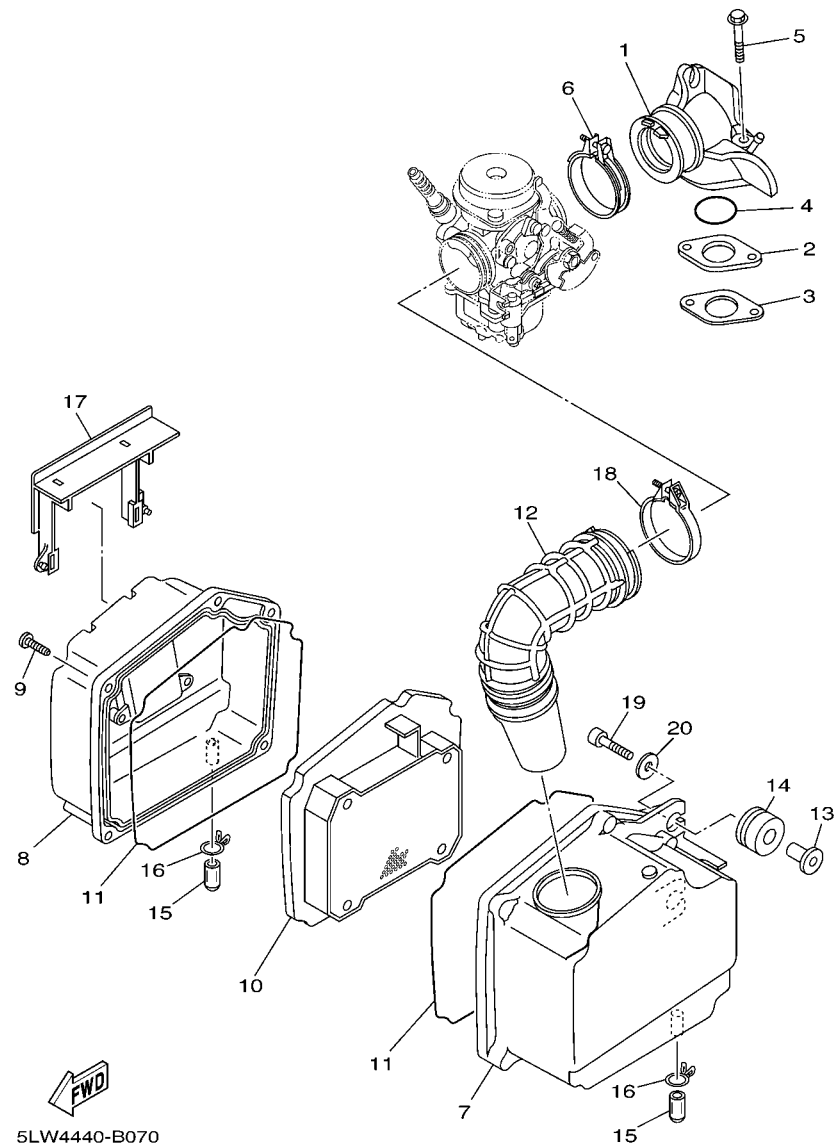






[illegible]





**FIG. 7 INTAKE**

REF. NO.	PART NO.	DESCRIPTION	5MX3				REMARKS
1	5LW-E3585-00	MANIFOLD	1				
2	5LW-13595-00	JOINT	1				
3	5MX-E3556-00	GASKET, MANIFOLD	1				
4	93210-25552	O-RING	1				
5	95817-06050	BOLT, FLANGE	2				
6	5MX-E3474-00	BAND	1				
7	5LW-E4411-00	CASE, AIR CLEANER 1	1				
8	5LW-E4412-00	CAP, CLEANER CASE 1	1				
9	9770N-50525	SCREW, TAPPING	5				
10	5LW-E4451-00	ELEMENT, AIR CLEANER	1				
11	5LW-E4452-00	SEAL	2				
12	5LW-E4453-00	JOINT, AIR CLEANER 1	1				
13	5LW-E4449-00	COLLAR	2				
14	5LW-E4435-00	GROMMET	2				
15	5LW-E443E-00	PIPE, DRAIN	2				
16	90467-12800	CLIP	2				
17	5LW-E4417-00	COVER 1	1				
18	5MX-E3575-00	BAND	1				
19	91317-06035	BOLT	2				
20	90201-06063	WASHER, PLATE	2				

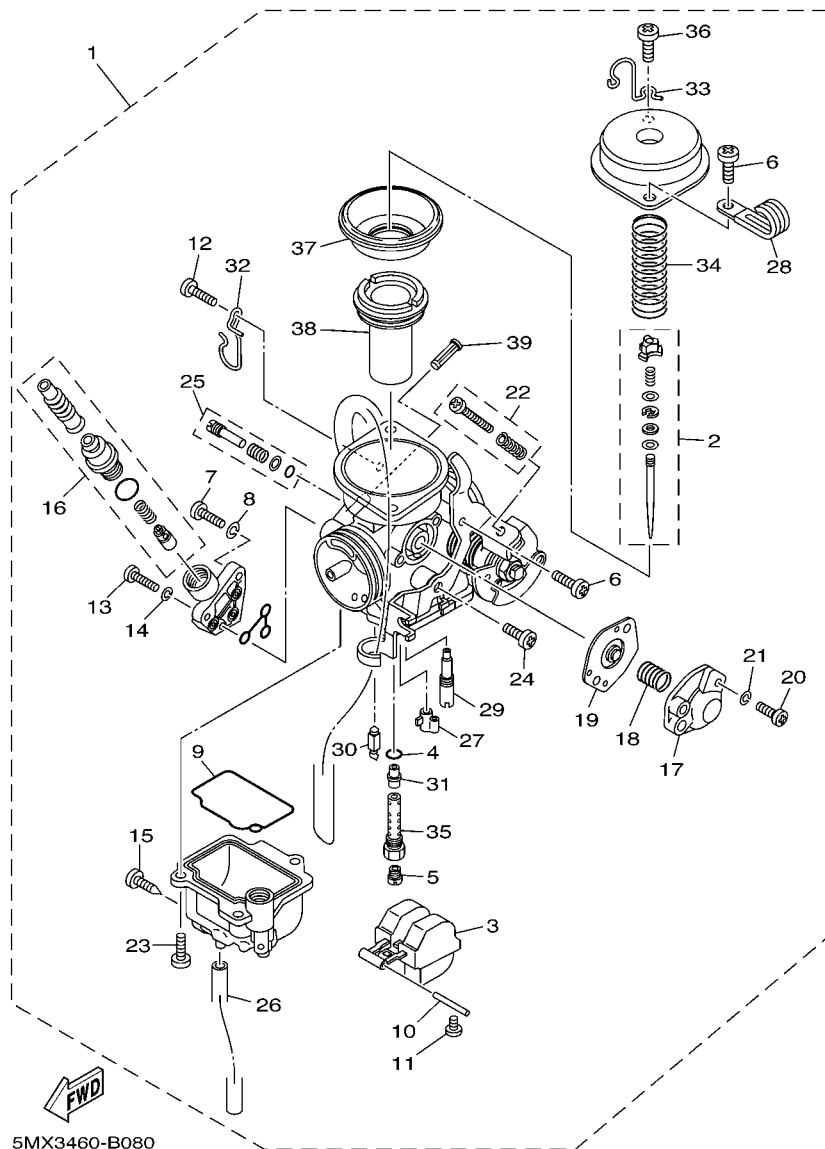
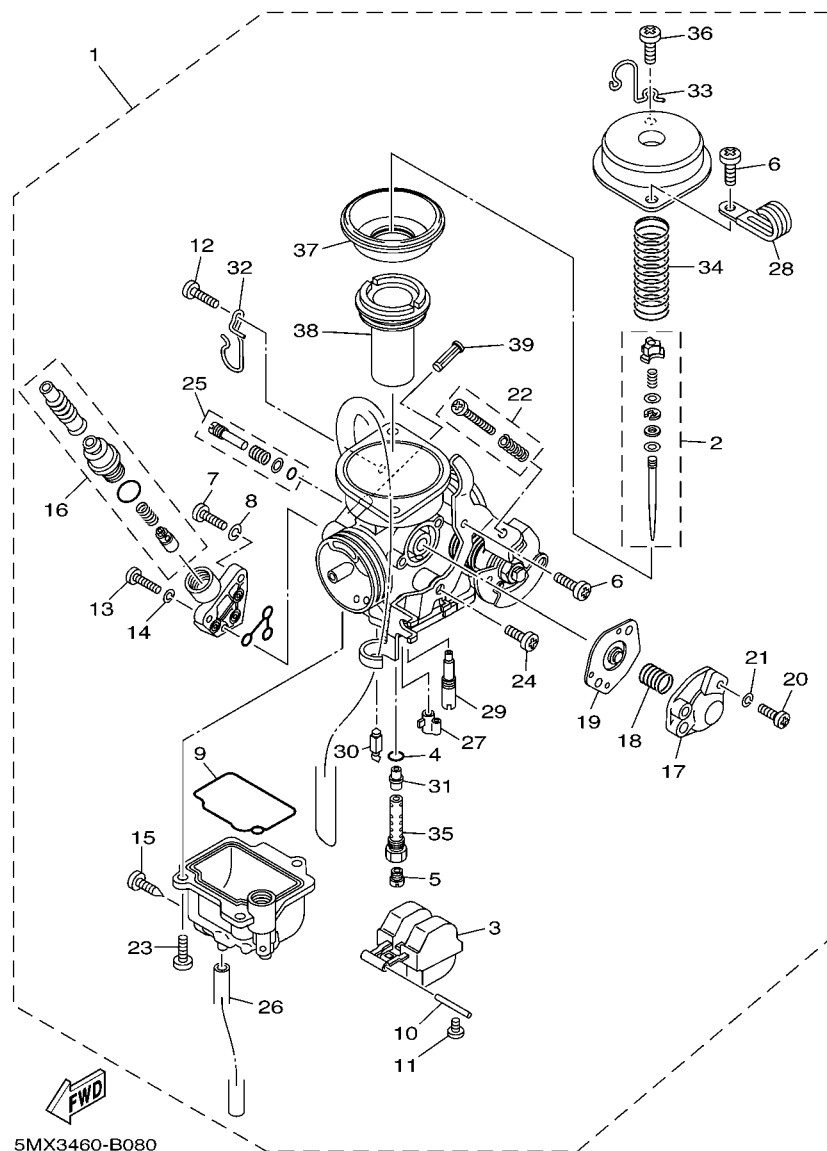


FIG. 8 CARBURETOR

REF. NO.	PART NO.	DESCRIPTION	5MX3				REMARKS
1	5MX-E4901-00	CARBURETOR ASSY 1	1				
2	5LW-1490J-00	.NEEDLE SET	1				
3	5HK-14985-00	.FLOAT	1				
4	583-14561-00	.O-RING	1				
5	3G2-1414A-71	.JET, MAIN (#102.5)	1				
6	98502-05008	.SCREW, PAN HEAD	2				
7	98502-05012	.SCREW, PAN HEAD	2				
8	92902-05100	.WASHER, SPRING	2				
9	5HK-14147-00	.O-RING	1				
10	353-14186-00	.PIN, FLOAT	1				
11	98507-04008	.SCREW, PAN HEAD	1				
12	4SV-24453-00	.SCREW	1				
13	98502-04018	.SCREW, PAN HEAD	1				
14	92902-04100	.WASHER, SPRING	1				
15	12R-14191-00	.PLUG, DRAIN	1				
16	5LW-1410A-00	.STARTER SET	1				
17	5AP-14280-00	.COVER, CARBURETOR	1				
18	5HK-14275-00	.SPRING	1				
19	5AP-14940-00	.DIAPHRAGM ASSY	1				
20	98502-04014	.SCREW, PAN HEAD	2				
21	92902-04100	.WASHER, SPRING	2				
22	5LW-14103-00	.THROTTLE SCREW SET	1				
23	98502-04010	.SCREW, PAN HEAD	3				
24	98507-04008	.SCREW, PAN HEAD	1				
25	5LW-14105-00	.PILOT SCREW SET	1				
26	5HK-14349-00	.PIPE	1				
27	4JG-14261-00	.HOLDER	1				



**FIG. 8 CARBURETOR**

REF. NO.	PART NO.	DESCRIPTION	5MX3				REMARKS
28	3UH-14146-00	.PLATE	1				
29	5LW-14142-17	.JET, PILOT (# 17.5)	1				
30	5LW-14150-00	.NEEDLE ASSY	1				
31	5LW-14141-13	.NOZZLE, MAIN	1				
32	5LW-14919-00	.CLIP	1				
- 33	5LW-14919-10	- .CLIP -	- 1 -	-	-	-	-
34	5LW-14589-00	.SPRING	1				
35	5LW-14261-00	.HOLDER	1				
36	98502-05010	.SCREW, PAN HEAD	1				
37	5LW-24411-00	.DIAPHRAGM	1				
- 38	5LW-14112-00	- .VALVE, THROTTLE 1 -	- 1 -	-	-	-	-
39	5LW-14994-00	.NET, FILTER	1				
-		-	-	-	-	-	-
-		-	-	-	-	-	-
-		-	-	-	-	-	-
-		-	-	-	-	-	-

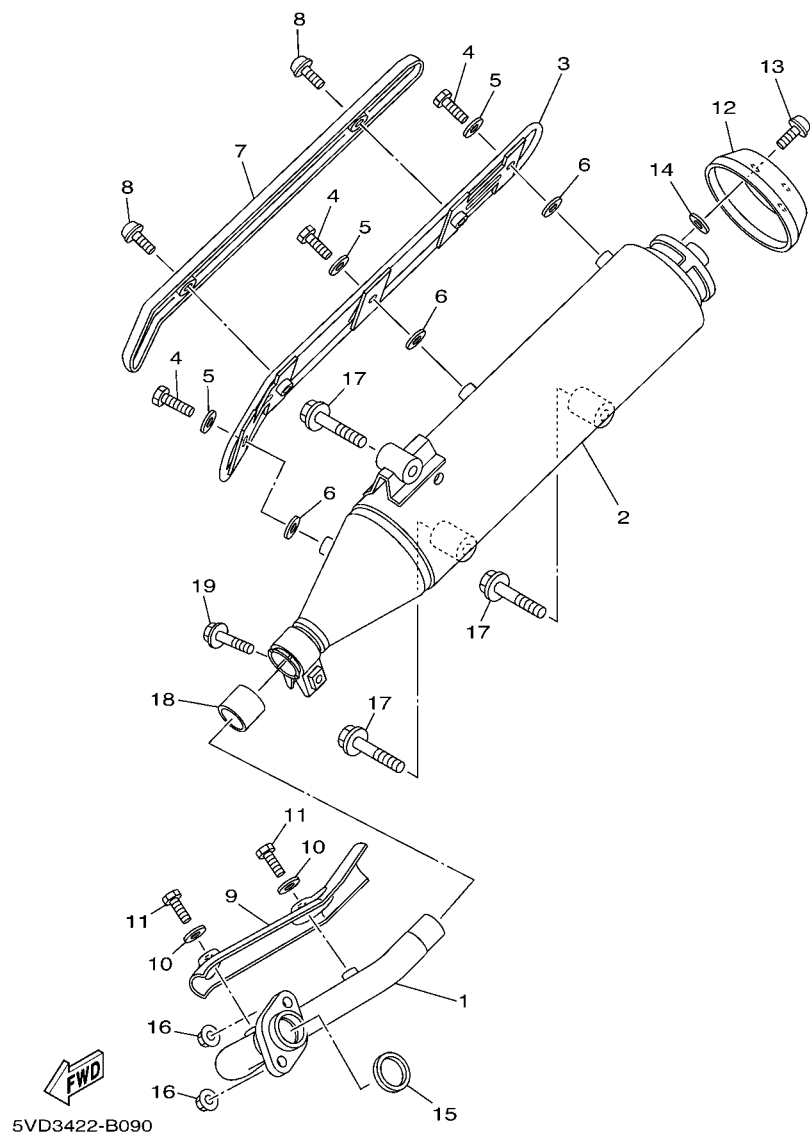


FIG. 9 EXHAUST

REF. NO.	PART NO.	DESCRIPTION	5MX3				REMARKS
1	5LW-E4610-10	EXHAUST PIPE ASSY 1	1				
2	5MX-E4710-10	MUFFLER ASSY 1	1				
3	5MX-E4718-00	PROTECTOR, MUFFLER 1	1				
4	97027-06010	BOLT	3				
5	92903-06200	WASHER, PLAIN	3				
6	5MX-E4766-00	WASHER, PROTECTOR	3				
7	5MX-E4728-00	PROTECTOR, MUFFLER 2	1				
8	90111-06802	BOLT	2				
9	5MX-E4628-10	PROTECTOR, EXHAUST PIPE	1				
10	92903-06200	WASHER, PLAIN	2				
11	97080-06008	BOLT	2				
12	5MX-E4799-00	CAP	1				
13	90111-06802	BOLT	2				
14	5MX-E4766-00	WASHER, PROTECTOR	3				
15	5MX-E4613-00	GASKET, EXHAUST PIPE	1				
16	95707-08500	NUT, FLANGE	2				
17	95817-10060	BOLT, FLANGE	3				
18	4FU-14714-01	GASKET, MUFFLER	1				
19	95817-08035	BOLT, FLANGE	1				

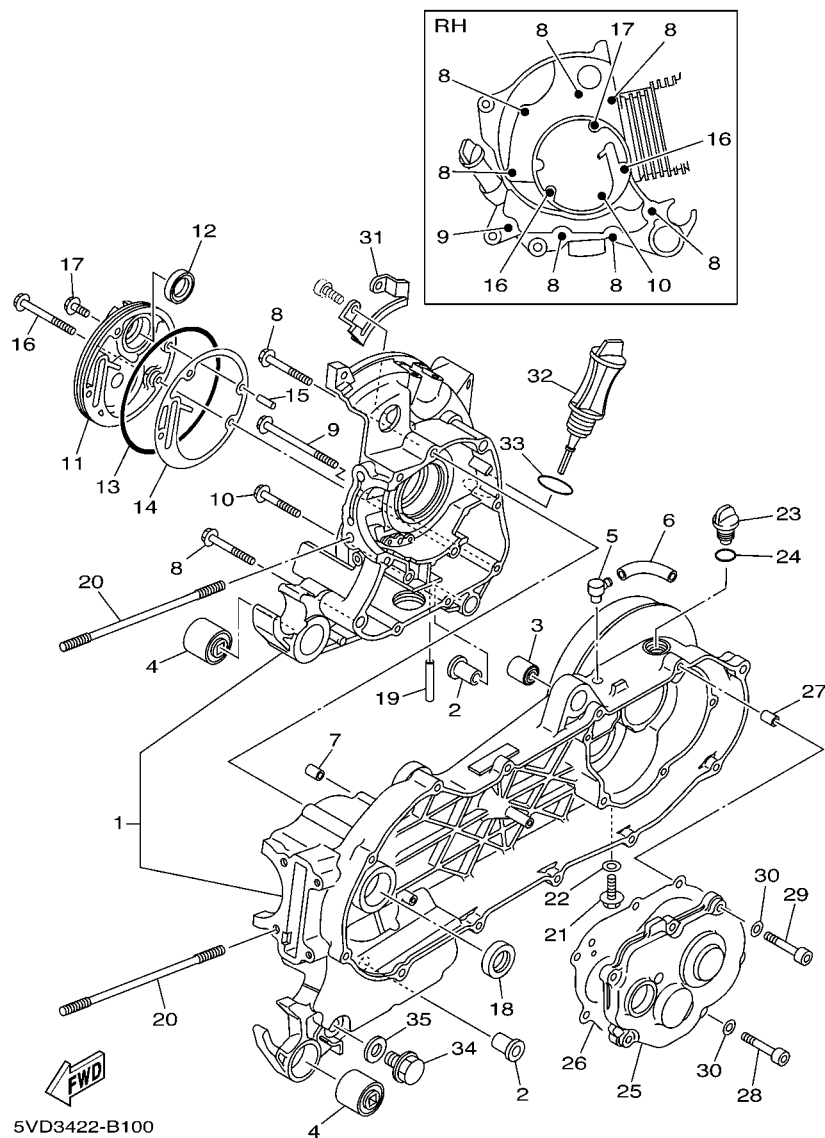
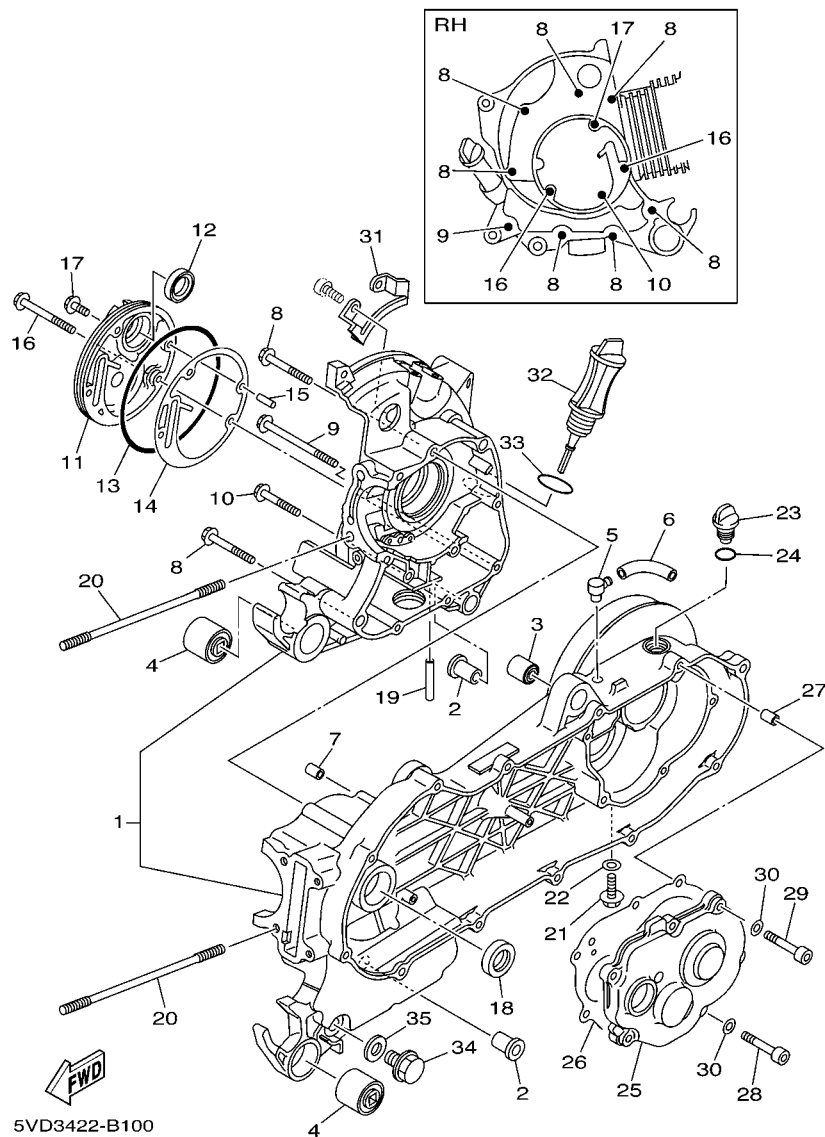


FIG. 10 CRANKCASE

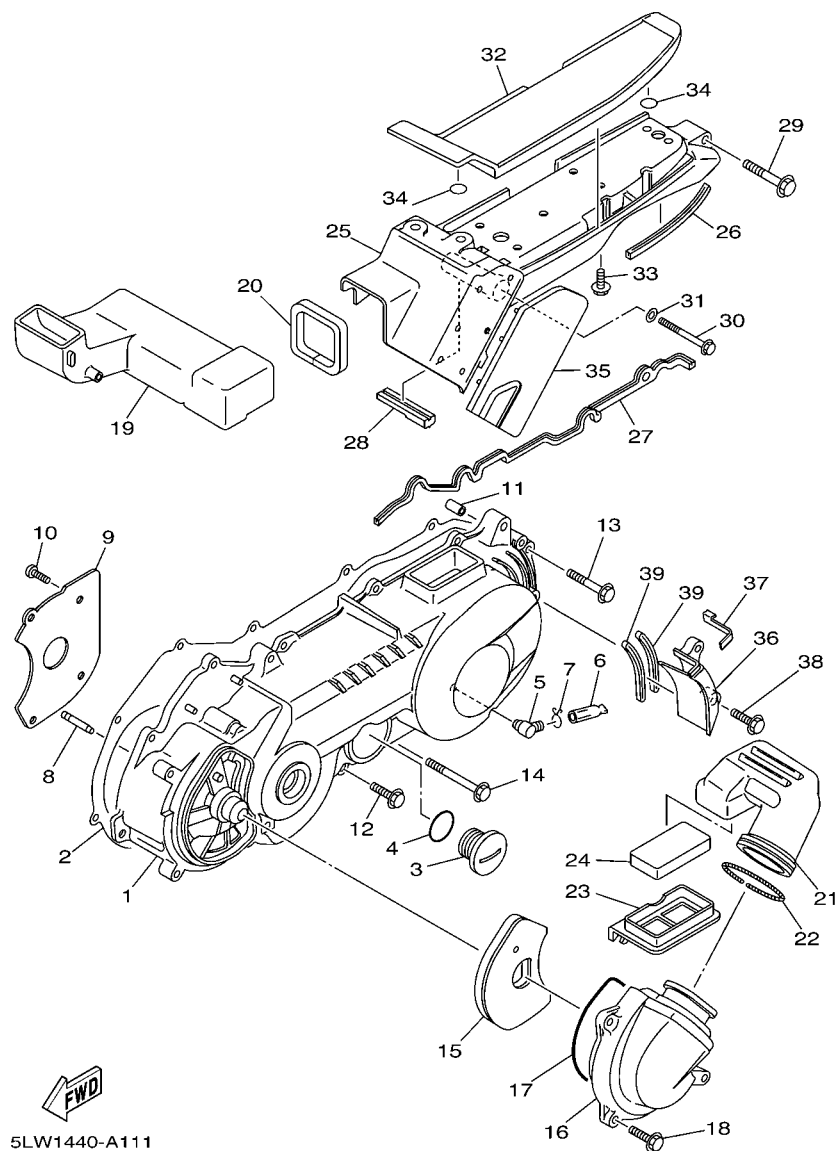
REF. NO.	PART NO.	DESCRIPTION	5MX3				REMARKS
1	5LW-E5150-04	CRANKCASE ASSY	1				
2	5MX-27121-00	BUSH	2				
3	164-22216-00	BUSH, REAR SHOCK ABSORBER	1				
4	5MX-F2123-00	BUSH 1	2				
5	5LW-E5371-01	BREATHER	1				
6	5LW-E5373-01	PIPE, BREATHER	1				
7	99530-10114	PIN, DOWEL	2				
8	95027-06060	BOLT, FLANGE	7				
9	95027-06100	BOLT, FLANGE	1				
10	95027-06050	BOLT, FLANGE	1				
11	5LW-E5417-00	COVER, CAP	1				
12	93102-19800	OIL SEAL	1				
13	93211-07800	O-RING	1				
14	5LW-E5453-00	GASKET	1				
15	99480-05010	PIN	1				
16	95027-06070	BOLT, FLANGE	2				
17	95027-06016	BOLT, FLANGE	1				
18	93102-22004	OIL SEAL	1				UR
	93102-22294	OIL SEAL	1				UR
19	5LW-E3416-00	PIPE, OIL 1	1				
20	5LW-11391-00	BOLT, STUD 1	4				
21	95817-08016	BOLT, FLANGE	1				
22	90430-08119	GASKET	1				
23	5LW-E5363-00	PLUG, OIL	1				
24	93210-148H8	O-RING	1				
25	5LW-E5421-00	COVER, CRANKCASE 2	1				
26	5LW-E5461-00	GASKET, CRANKCASE COVER 2	1				





**FIG. 10 CRANKCASE**

[illegible]



**FIG. 11 CRANKCASE COVER 1**

REF. NO.	PART NO.	DESCRIPTION	5MX3				REMARKS
1	5LW-E5411-00	COVER, CRANKCASE 1	1				
2	5LW-E5451-00	GASKET, CRANKCASE COVER 1	1				
3	90340-32820	PLUG, STRAIGHT SCREW	1				
4	93210-328G3	O-RING	1				
5	5LW-E5371-01	BREATHER	1				
6	4ST-E443E-00	PIPE, DRAIN	1				
7	90467-11106	CLIP	1				
8	5LW-15659-00	SHAFT	1				
9	5LW-E5191-00	PLATE	1				
10	98907-06010	SCREW, BIND	4				
11	99530-10114	PIN, DOWEL	2				
12	95027-06025	BOLT, FLANGE	10				
13	95027-06035	BOLT, FLANGE	2				
14	95027-06060	BOLT, FLANGE	1				
15	5LW-E5407-01	ELEMENT 1	1				
16	5LW-E5471-00	DUCT, AIR	1				
17	5LW-E5472-00	SEAL, AIR DUCT	1				
18	95027-06020	BOLT, FLANGE	3				
19	5LW-E5473-00	DUCT, AIR	1				
20	5LW-E5335-00	DAMPER 3	1				
21	5LW-E5475-00	DUCT, AIR	1				
22	5LW-15479-00	SPRING	1				
23	5LW-E5404-00	GUIDE, ELEMENT	1				
24	5LW-E5408-00	ELEMENT 2	1				
25	5LW-E5492-00	COVER	1				
26	5MX-E5315-00	SEAL, CRANKCASE	1				
27	5MX-E5379-00	SEAL, CRANKCASE	1				



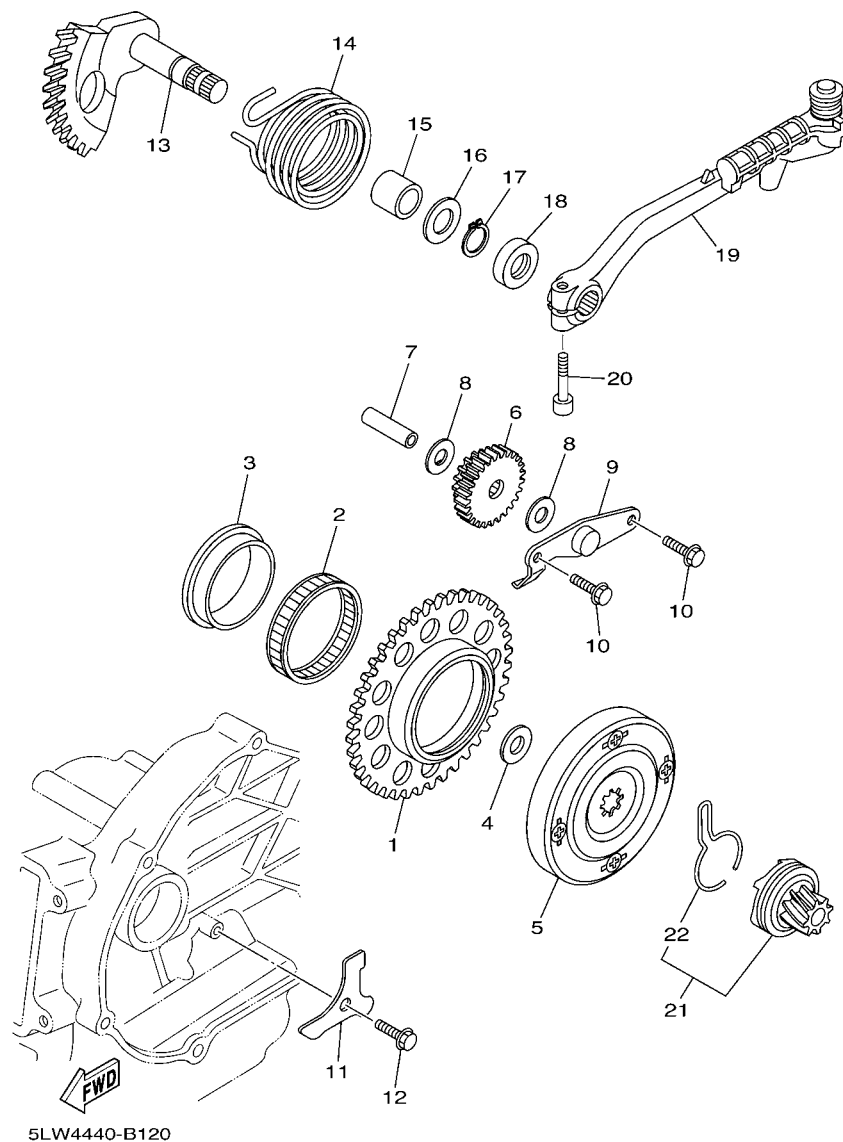
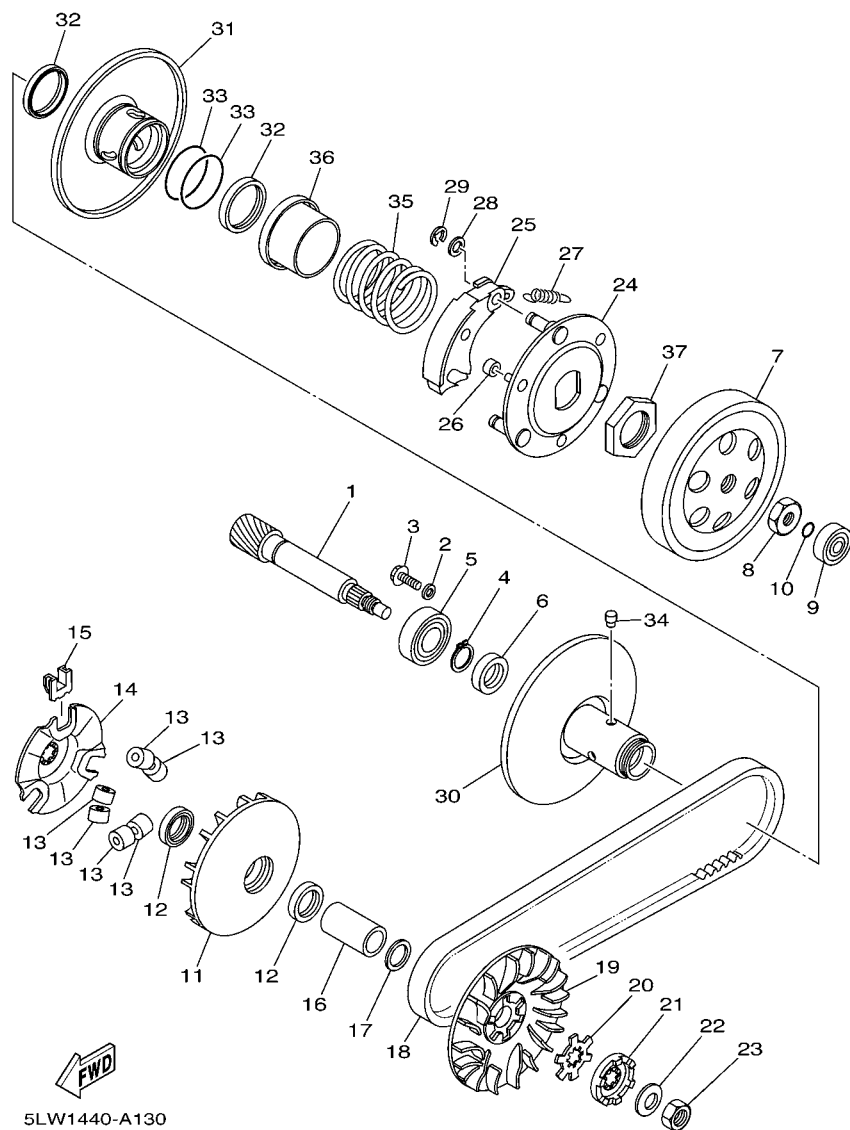


FIG. 12 STARTER

REF. NO.	PART NO.	DESCRIPTION	5MX3				REMARKS
1	5LW-E5524-02	WHEEL, STARTER	1				
2	93310-450Y9	BEARING	1				
3	5LW-E5538-00	BOSS, GEAR 2	1				
4	90201-164J0	WASHER	1				
5	5LW-E5570-10	STARTER CLUTCH ASSY	1				
6	5LW-E5650-00	IDLE GEAR ASSY	1				
7	5LW-15521-00	SHAFT 1	1				
8	90201-10018	WASHER, PLATE	2				
9	5LW-E5532-00	PLATE, IDLE GEAR	1				
10	95027-06012	BOLT, FLANGE	2				
11	5LW-E5645-00	PLATE	1				
12	95027-06012	BOLT, FLANGE	1				
13	5LW-15601-01	KICK SHAFT ASSY	1				
14	90508-32768	SPRING, TORSION	1				
15	90380-15800	BUSH, SOLID	1				
16	90201-154E8	WASHER, PLATE (T=1.0)	1				
17	99009-15400	CIRCLIP	1				
18	93102-15801	OIL SEAL	1				
19	5MX-E5620-00	KICK CRANK ASSY	1				
20	90153-06038	SCREW, HEXAGON	1				
21	5LW-E5670-00	KICK PINION ASSY 2	1				
22	5LW-15673-00	.CLIP	1				



**FIG. 13 CLUTCH**

REF. NO.	PART NO.	DESCRIPTION	5MX3				REMARKS
1	5LW-E6111-00	GEAR, PRIMARY DRIVE	1				
2	90201-06060	WASHER, PLATE	1				
3	95027-06010	BOLT, FLANGE	1				
4	99009-17400	CIRCLIP	1				
5	93306-20324	BEARING	1				
6	93102-17467	OIL SEAL	1				
7	5LW-16611-00	CLUTCH HOUSING COMP.	1				
8	90170-10317	NUT	1				
9	93300-63813	BEARING	1				
10	93210-06800	O-RING	1				
11	5LW-E7620-00	PRIMARY SLIDING SHEAVE COMP.	1				
12	93101-21170	OIL SEAL	2				
13	5LW-17632-00	WEIGHT	6				
14	5LW-17623-00	CAM	1				
15	5LW-17653-00	SLIDER	3				
16	90387-16009	COLLAR	1				
17	90201-16008	WASHER, PLATE	1				
18	5LW-E7641-00	V-BELT	1				
19	5LW-E7611-01	SHEAVE, PRIMARY FIXED	1				
20	90214-14002	WASHER, CLAW	1				
21	5LW-15657-00	CLUTCH, ONEWAY	1				
22	90208-12050	WASHER, CONICAL SPRING	1				
23	95307-12700	NUT	1				
24	3YJ-16631-00	CARRIRE COMP.	1				
25	5HK-16623-00	SHOE, CLUTCH WEIGHT	3				
26	3YJ-16629-00	DAMPER, CLUTCH WEIGHT	3				
27	4KN-16626-00	SPRING, CLUTCH WEIGHT 1	3				

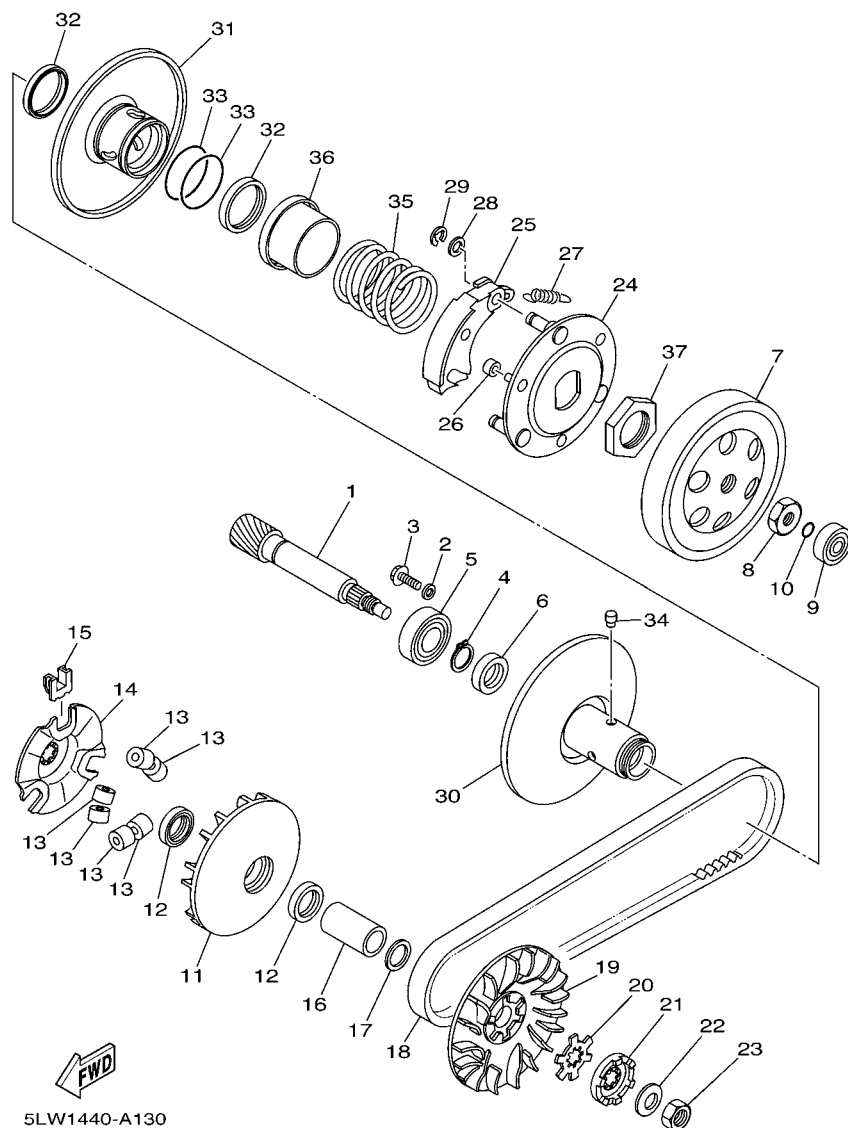


FIG. 13 CLUTCH

[illegible]

[illegible]



REF. NO.	PART NO.	DESCRIPTION	5MX3				REMARKS
1	5MX-F1110-00	FRAME COMP.	1				
2	5MX-F1410-00	ENGINE BRACKET COMP.	1				
3	5G3-21481-00	BOLT, ENGINE MOUNTING 1	2				
4	95607-10200	NUT, SELF-LOCKING	2				
5	5MX-F7114-00	STOPPER, MAIN STAND	2				
6	90387-08754	COLLAR	2				
7	95807-08050	BOLT, FLANGE	2				
8	95607-08200	NUT, SELF-LOCKING	2				
9	5MX-F1459-00	SPACER	1				
10	93306-003X4	BEARING	2				
11	5MX-F5181-00	AXLE, WHEEL	1				
12	90201-12688	WASHER, PLATE	1				
13	95607-12200	NUT, SELF-LOCKING	1				
14	5MX-F8356-00	STAY 1	1				
15	95827-08012	BOLT, FLANGE	3				
16	90480-01558	GROMMET	4				
17	5MX-F117M-00	COVER 2	1				
18	5MX-F8100-00	TOOL KIT	1				





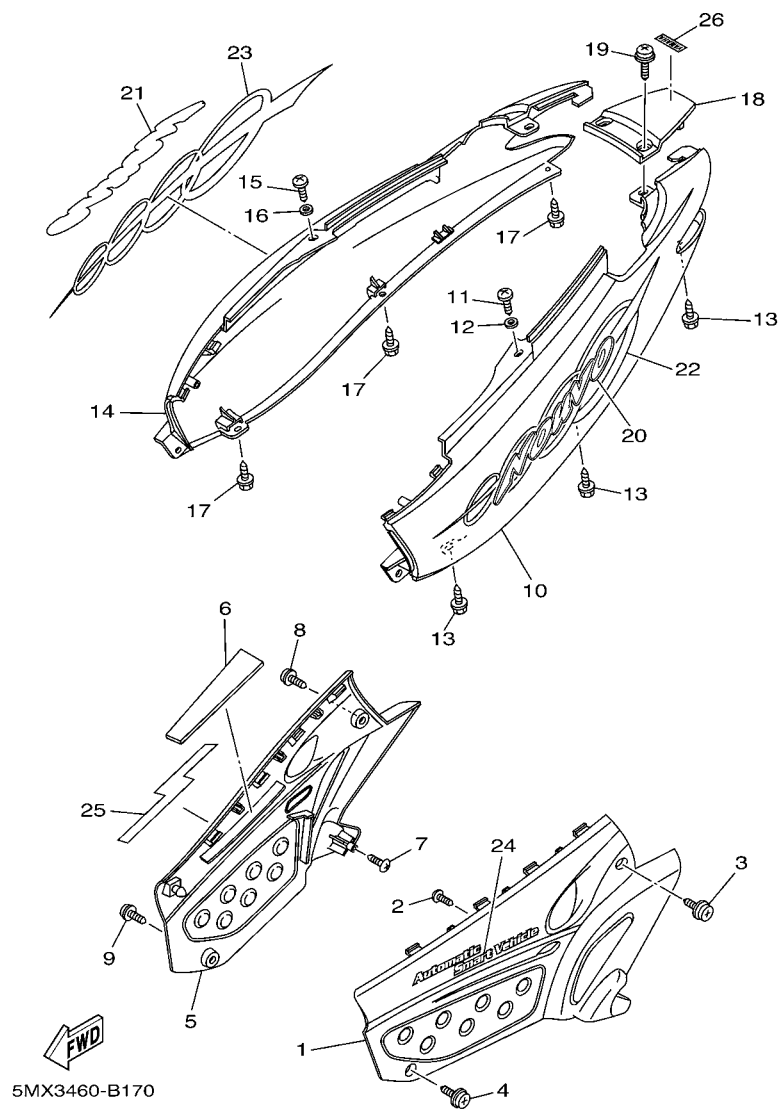


FIG. 17 SIDE COVER

REF. NO.	PART NO.	DESCRIPTION	5MX3				REMARKS
1	5LW-F1711-00-P0	COVER, SIDE 1	1				UR DGYM1
	5LW-F1711-00-P5	COVER, SIDE 1	1				UR VRC1
	5LW-F1711-00-33	COVER, SIDE 1	1				UR YB
2	97707-50012	SCREW, TAPPING	1				
3	90159-06181	SCREW, WITH WASHER	1				
4	90159-06178	SCREW, WITH WASHER	1				
5	5LW-F1721-00-P0	COVER, SIDE 2	1				UR DGYM1
	5LW-F1721-00-P5	COVER, SIDE 2	1				UR VRC1
	5LW-F1721-00-33	COVER, SIDE 2	1				UR YB
6	5MX-F176E-00	PLATE	1				
7	97707-50012	SCREW, TAPPING	1				
8	90159-06181	SCREW, WITH WASHER	1				
9	90159-06178	SCREW, WITH WASHER	1				
10	5LW-F1731-00-P0	COVER, SIDE 3	1				UR DGYM1
	5LW-F1731-00-P5	COVER, SIDE 3	1				UR VRC1
	5LW-F1731-00-33	COVER, SIDE 3	1				UR YB
11	97707-50014	SCREW, TAPPING	1				
12	92907-05200	WASHER	1				
13	90163-05005	SCREW, TAPPING	3				
14	5LW-F1741-00-P0	COVER, SIDE 4	1				UR DGYM1
	5LW-F1741-00-P5	COVER, SIDE 4	1				UR VRC1
	5LW-F1741-00-33	COVER, SIDE 4	1				UR YB
15	97707-50014	SCREW, TAPPING	1				
16	92907-05200	WASHER	1				
17	90163-05005	SCREW, TAPPING	3				
18	5LW-F171E-00-P0	COVER, SIDE 5	1				UR DGYM1
	5LW-F171E-00-P5	COVER, SIDE 5	1				UR VRC1

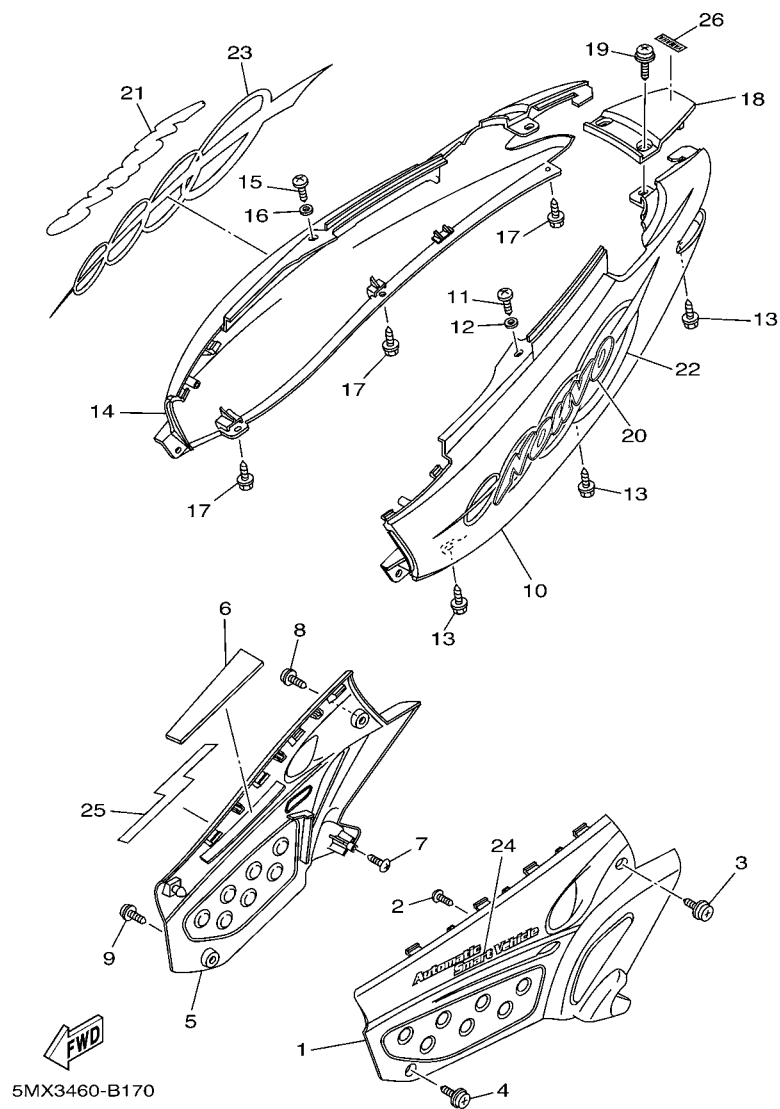
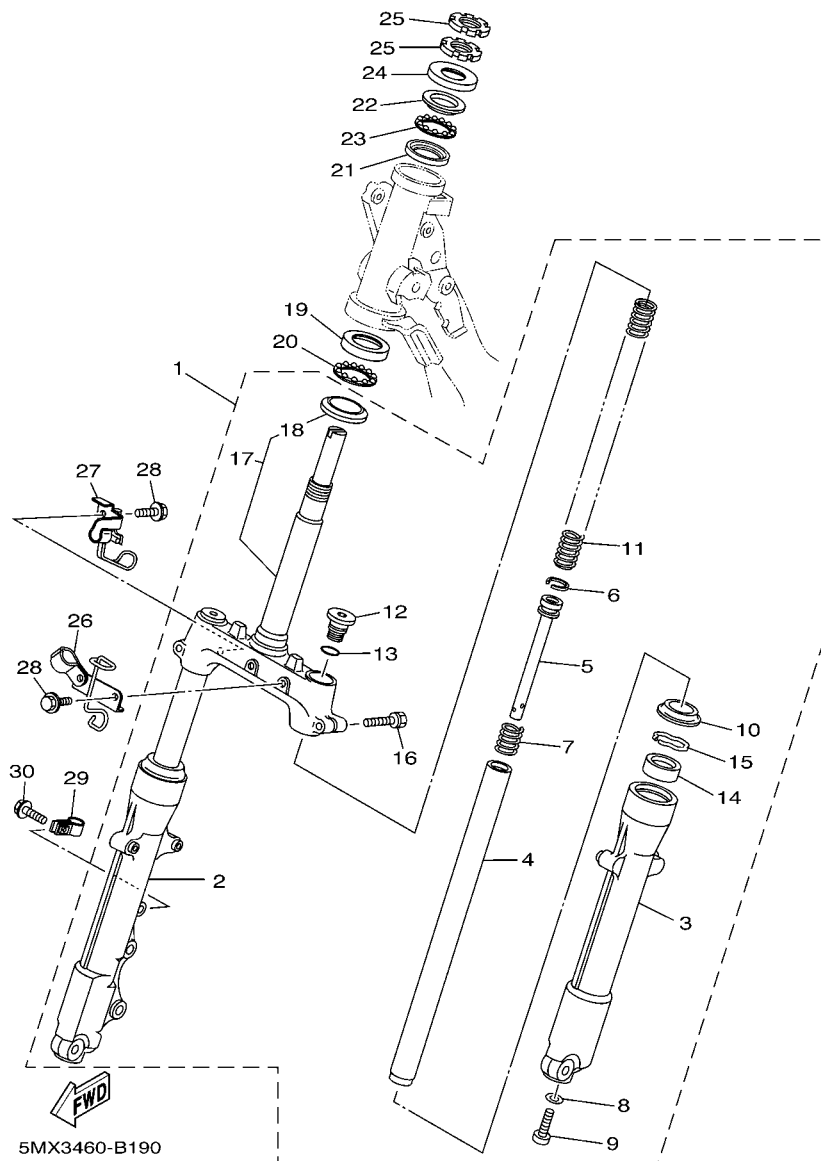


FIG. 17 SIDE COVER

REF. NO.	PART NO.	DESCRIPTION	5MX3				REMARKS
18	5LW-F171E-00-33	COVER, SIDE 5	1				UR YB
19	90159-06067	SCREW, WITH WASHER	2				
20	5LW-F173B-00	EMBLEM	1				
21	5LW-F174B-00	EMBLEM	1				
22	5MX-F173E-00	GRAPHIC 1	1				UR FOR DGYM1
----- 5MX-F173E-10 -----			1				UR FOR VRC1
	5MX-F173E-20	GRAPHIC 1	1				UR FOR YB
23	5MX-F173F-00	GRAPHIC 2	1				UR FOR DGYM1
	5MX-F173F-10	GRAPHIC 2	1				UR FOR VRC1
	5MX-F173F-20	GRAPHIC 2	1				UR FOR YB
----- 24 5MX-F174G-00 -----			1				UR FOR DGYM1
	5MX-F174G-10	GRAPHIC 3	1				UR FOR VRC1,YB
25	5MX-F174H-00	GRAPHIC 4	1				UR FOR DGYM1
	5MX-F174H-10	GRAPHIC 4	1				UR FOR VRC1,YB
26	5MX-F153E-10	EMBLEM, YAMAHA	1				UR FOR DGYM1
----- 5MX-F153E-20 -----			1				UR FOR VRC1,YB
-----							
-----							
-----							





**FIG. 19 STEERING**

REF. NO.	PART NO.	DESCRIPTION	5MX3				REMARKS
1	5MX-F3100-00	FRONT FORK ASSY	1				
2	5MX-F3126-00	.TUBE, OUTER (LEFT)	1				
3	5MX-F3136-00	.TUBE, OUTER (RIGHT)	1				
4	5MX-F3110-00	.INNER TUBE COMP.1	2				
5	5MX-F3170-00	.CYLINDER COMP., FRONT FORK	2				
6	2JG-F3157-00	.RING, PISTON	2				
7	5LM-F3152-00	.SPRING, SUB	2				
8	509-F3158-L0	.GASKET	2				
9	278-F3181-50	.BOLT, HEXAGON SOCKET HEAD	2				
10	5LM-F3144-00	.SEAL, DUST	2				
11	5MX-F3141-00	.SPRING, FRONT FORK	2				
12	5LM-F3111-00	.BOLT, CAP	2				
13	2JG-F3147-00	.O-RING	2				
14	3AY-F3145-00	.OIL SEAL	2				
15	1T8-F3156-00	.CLIP, OIL SEAL	2				
16	5LM-F3346-00	.BOLT 1	2				
17	5MX-F3340-00	.UNDER BRACKET COMP.	1				
18	156-23411-00	..RACE, BALL 1	1				
19	156-23412-00	RACE, BALL 2	1				
20	5TL-2341E-00	RETAINER, BALL BEARING	1				
21	22F-23412-01	RACE, BALL 2	1				
22	22F-23411-01	RACE, BALL 1	1				
23	5TL-2341E-10	RETAINER, BALL BEARING	1				
24	3XA-F3416-00	COVER, BALL RACE 2	1				
25	90179-25033	NUT	2				
26	5MX-F5875-00	HOLDER, BRAKE HOSE 1	1				
27	5MX-F5876-00	HOLDER, BRAKE HOSE 2	1				

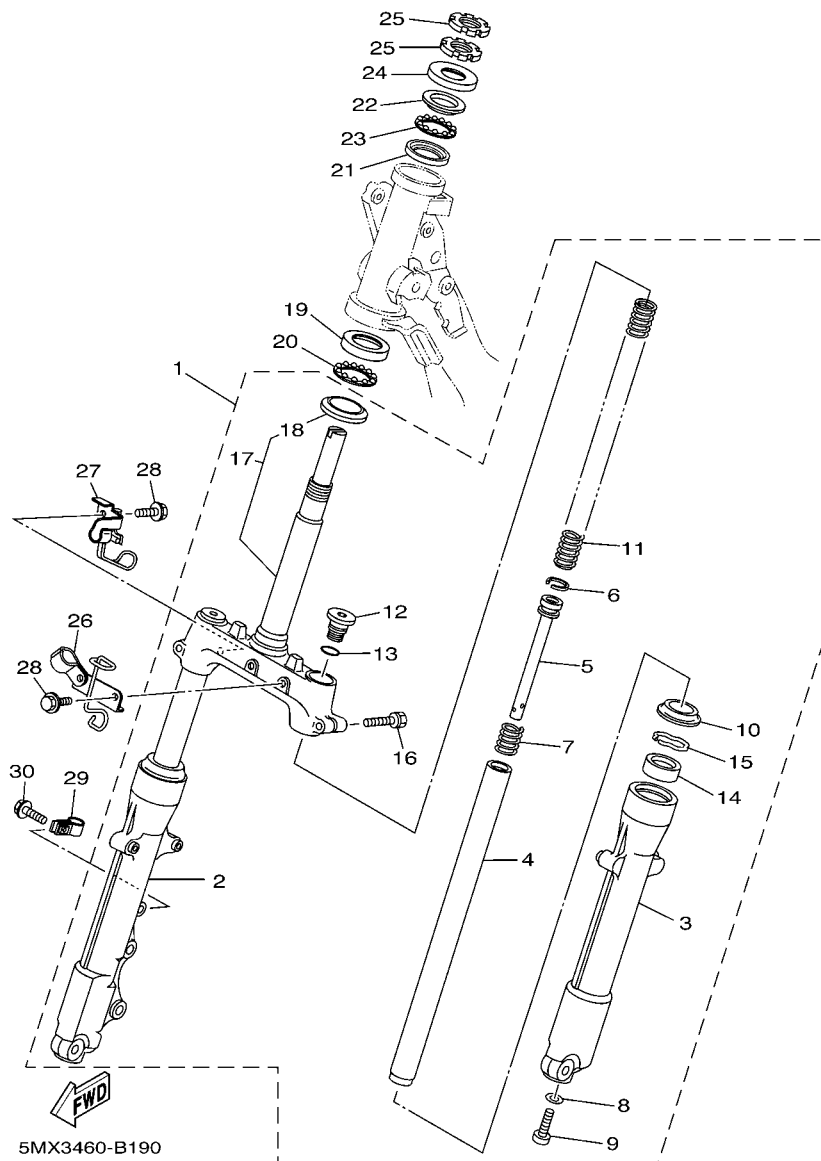
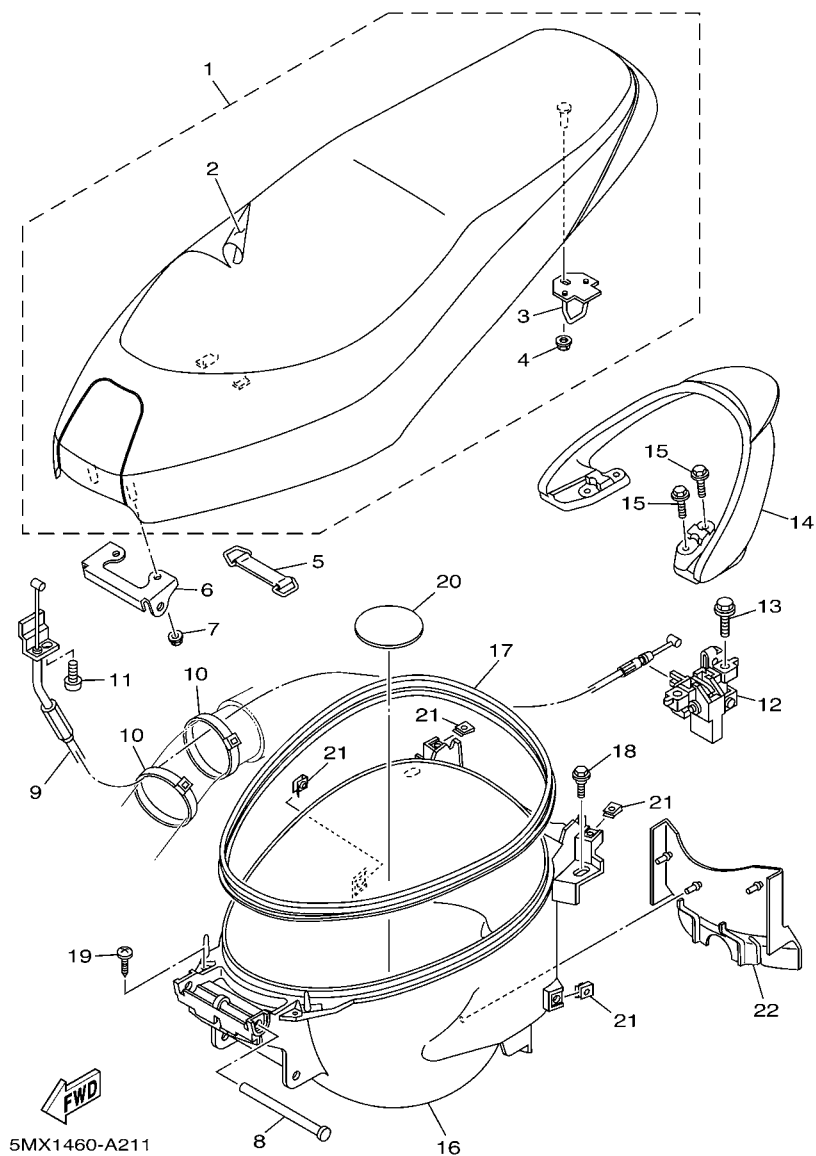


FIG. 19 STEERING

[illegible]





**FIG. 21 SEAT**

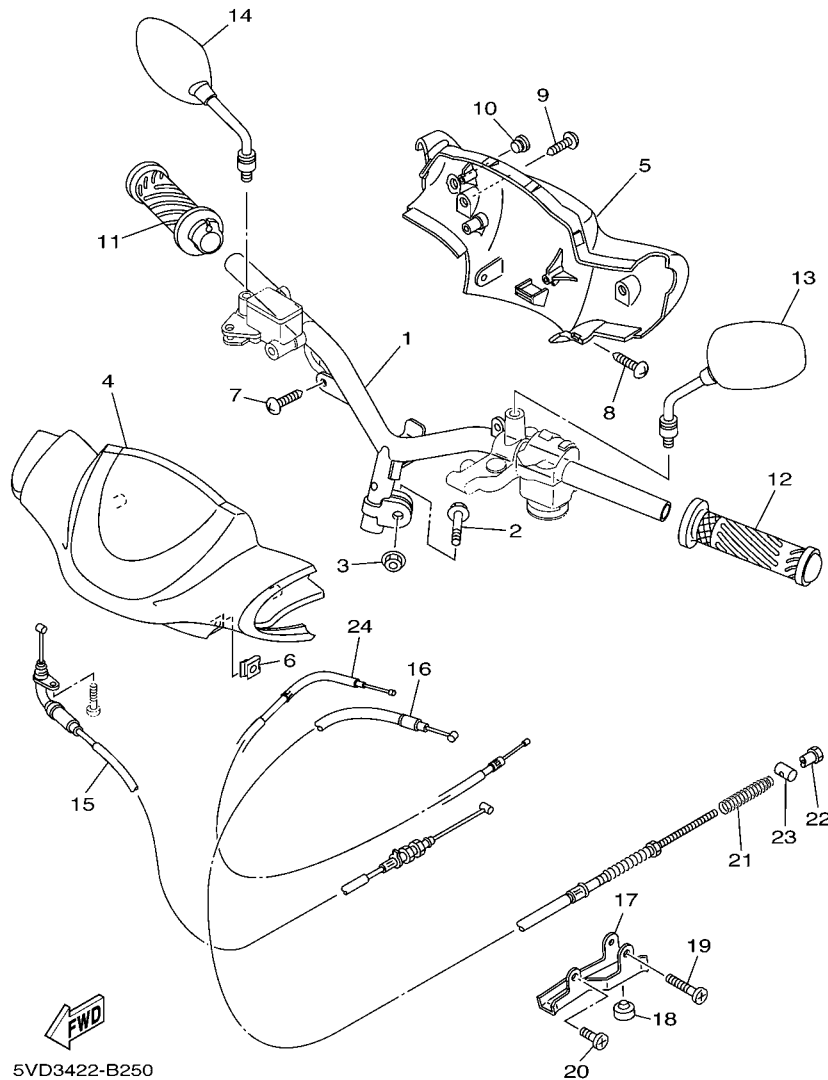
[illegible]





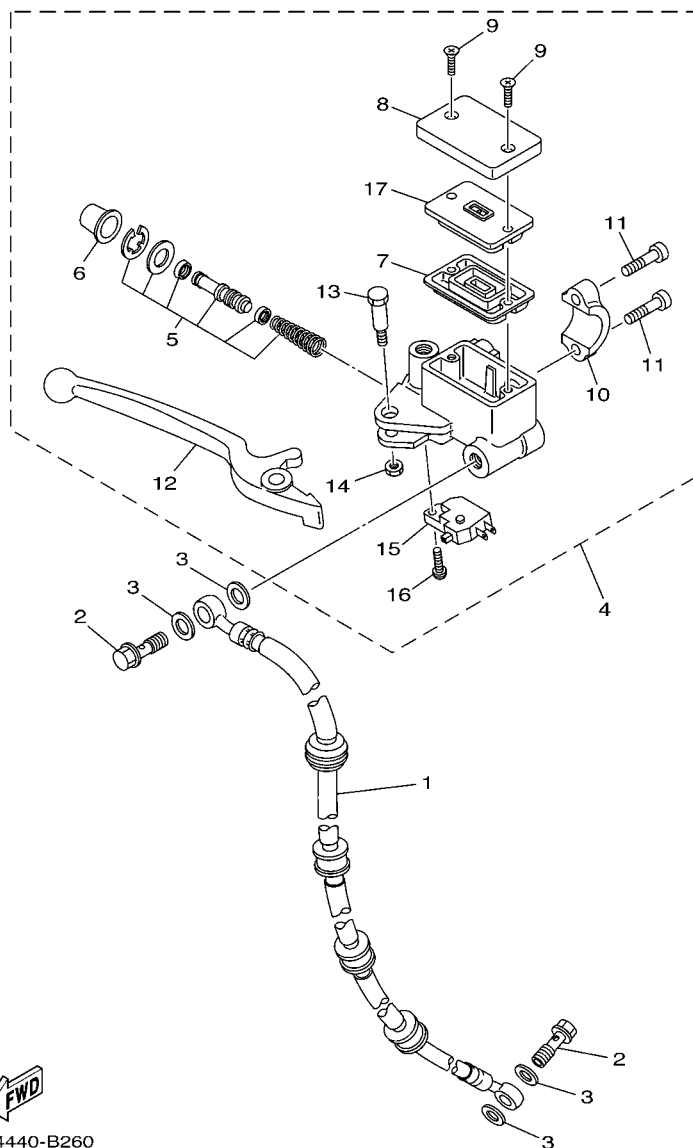






**FIG. 25 STEERING HANDLE & CABLE**

REF. NO.	PART NO.	DESCRIPTION	5MX3				REMARKS
1	5LW-F6110-10	HANDLE COMP.	1				
2	90105-10036	BOLT, FLANGE	1				
3	90185-10154	NUT, SELF-LOCKING	1				
4	5LW-F6143-00-P0	COVER, HANDLEBAR UPPER 1	1				UR DGYM1
	5LW-F6143-00-P5	COVER, HANDLEBAR UPPER 1	1				UR VRC1
	5LW-F6143-00-33	COVER, HANDLEBAR UPPER 1	1				UR YB
5	5LW-F6145-10	COVER, HANDLEBAR UPPER 2	1				
6	90183-05807	NUT, SPRING	2				
7	97707-50016	SCREW, TAPPING	2				
8	97707-50012	SCREW, TAPPING	2				
9	97707-50012	SCREW, TAPPING	2				
10	4US-F6199-00	PLUG, BLIND	1				
11	5LW-F6240-00	GRIP ASSY	1				
12	5LW-F6241-00	GRIP	1				
13	5MX-F6280-00	REAR VIEW MIRROR ASSY (LEFT)	1				
14	5MX-F6290-00	REAR VIEW MIRROR ASSY (RIGHT)	1				
15	5LW-F6311-00	CABLE, THROTTLE 1	1				
16	5LW-F6351-00	CABLE, BRAKE	1				
17	5MX-F637G-00	HOLDER, WIRE	1				
18	4YY-F7114-00	STOPPER, MAIN STAND	1				
19	98507-06040	SCREW, PAN HEAD	1				
20	98507-06014	SCREW, PAN HEAD	1				
21	90501-16003	SPRING, COMPRESSION	1				
22	90179-06411	NUT	1				
23	90249-12008	PIN	1				
24	5LW-F6331-00	CABLE, STARTER 1	1				



**FIG. 26 FRONT MASTER CYLINDER**

[illegible]

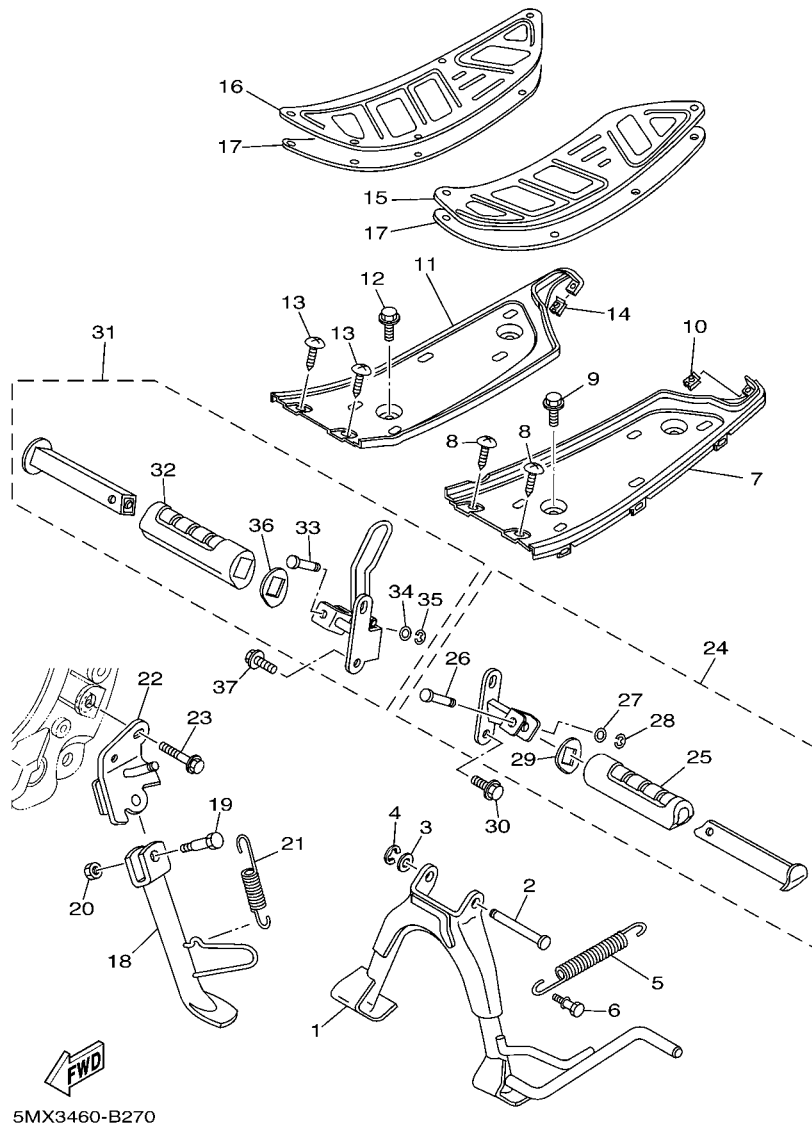


FIG. 27 STAND & FOOTREST

REF. NO.	PART NO.	DESCRIPTION	5MX3				REMARKS
1	5MX-F7111-00	STAND, MAIN	1				
2	90249-10002	PIN	1				
3	90201-10119	WASHER, PLATE	1				
4	99001-08600	CIRCLIP	1				
5	90506-35002	SPRING, TENSION	1				
6	5LW-F7254-00	HÖÖK	1				
7	5LW-F7481-10	BOARD, FOOTREST	1				
8	97707-50014	SCREW, TAPPING	2				
9	90119-06044	BOLT, WITH WASHER	2				
10	90183-05807	NUT, SPRING	1				
11	5LW-F7488-10	BOARD, FOOTREST 2	1				
12	90119-06044	BOLT, WITH WASHER	2				
13	97707-50014	SCREW, TAPPING	2				
14	90183-05807	NUT, SPRING	1				
15	5MX-F7483-00	MAT 1	1				
16	5MX-F7484-00	MAT 2	1				
17	5MX-F7414-00	DAMPER, FOOTREST	2				
18	5MX-F7311-00	STAND, SIDE	1				
19	90109-08034	BOLT	1				
20	95307-08700	NUT	1				
21	90506-20514	SPRING, TENSION	1				
22	5MX-F7321-00	BRACKET, SIDE STAND	1				
23	95807-10040	BOLT, FLANGE	2				
24	5MX-F7430-10	REAR FOOTREST ASSY 1	1				
25	5MX-F7433-00	.COVER, REAR FOOTREST	1				
26	90249-06220	.PIN	1				
27	92907-06200	.WASHER	1				



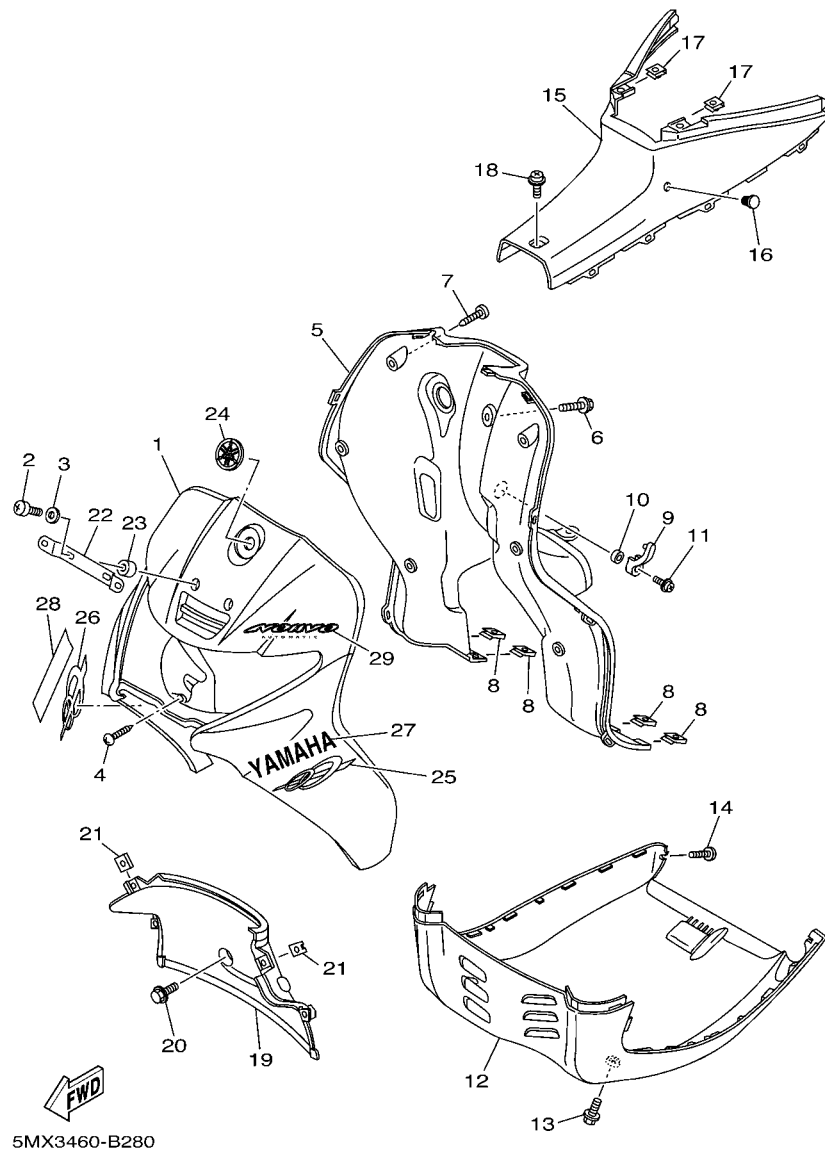


FIG. 28 LEG SHIELD

REF. NO.	PART NO.	DESCRIPTION	5MX3				REMARKS
1	5LW-F8311-00-P0	LEG SHIELD 1	1				UR DGYM1
	5LW-F8311-00-P6	LEG SHIELD 1	1				UR VRC1
	5LW-F8311-00-33	LEG SHIELD 1	1				UR YB
2	98507-06025	SCREW, PAN HEAD	2				
3	92907-06600	WASHER, PLATE	2				
4	97707-50014	SCREW, TAPPING	2				
5	5LW-F8312-10	LEG SHIELD 2	1				
6	90159-06181	SCREW, WITH WASHER	1				
7	97707-50014	SCREW, TAPPING	6				
8	90183-05807	NUT, SPRING	4				
9	5LW-F8257-10	HOOK 1	1				
10	5MX-F8373-00	COLLAR	1				
11	90159-06181	SCREW, WITH WASHER	1				
12	5LW-F8385-10	COVER, LOWER	1				
13	90119-06044	BOLT, WITH WASHER	2				
14	97707-50014	SCREW, TAPPING	2				
15	5LW-F842N-10	COVER 2	1				
16	4US-F6199-00	PLUG, BLIND	1				
17	90183-05807	NUT, SPRING	2				
18	90159-06033	SCREW, WITH WASHER	1				
19	5LW-F1552-10	FENDER, INNER	1				
20	90119-06044	BOLT, WITH WASHER	2				
21	90183-05807	NUT, SPRING	2				
22	3AY-H454E-00	BRACKET, NUMBER PLATE	1				
23	90387-06818	COLLAR	2				
24	5LM-F313B-00	EMBLEM 1	1				
25	5MX-F8391-00	GRAPHIC 1	1				UR FOR DGYM1





[illegible]

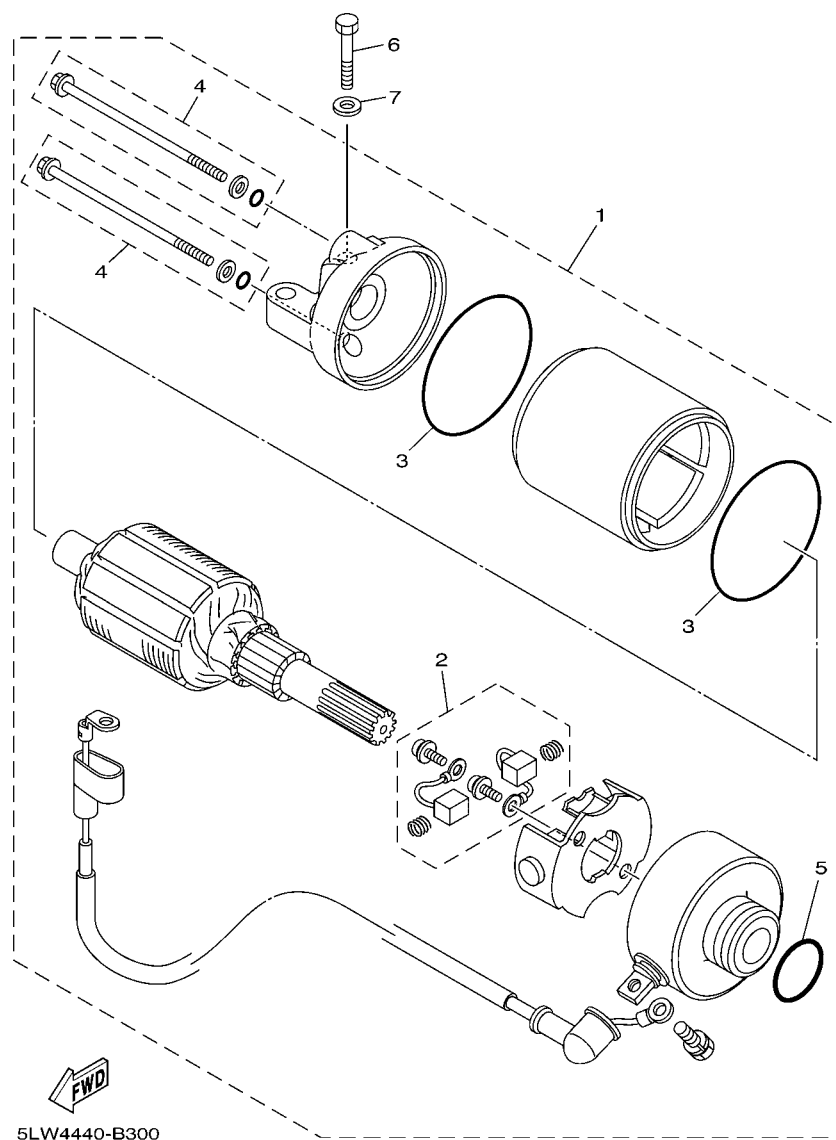


FIG. 30 STARTING MOTOR

[illegible]

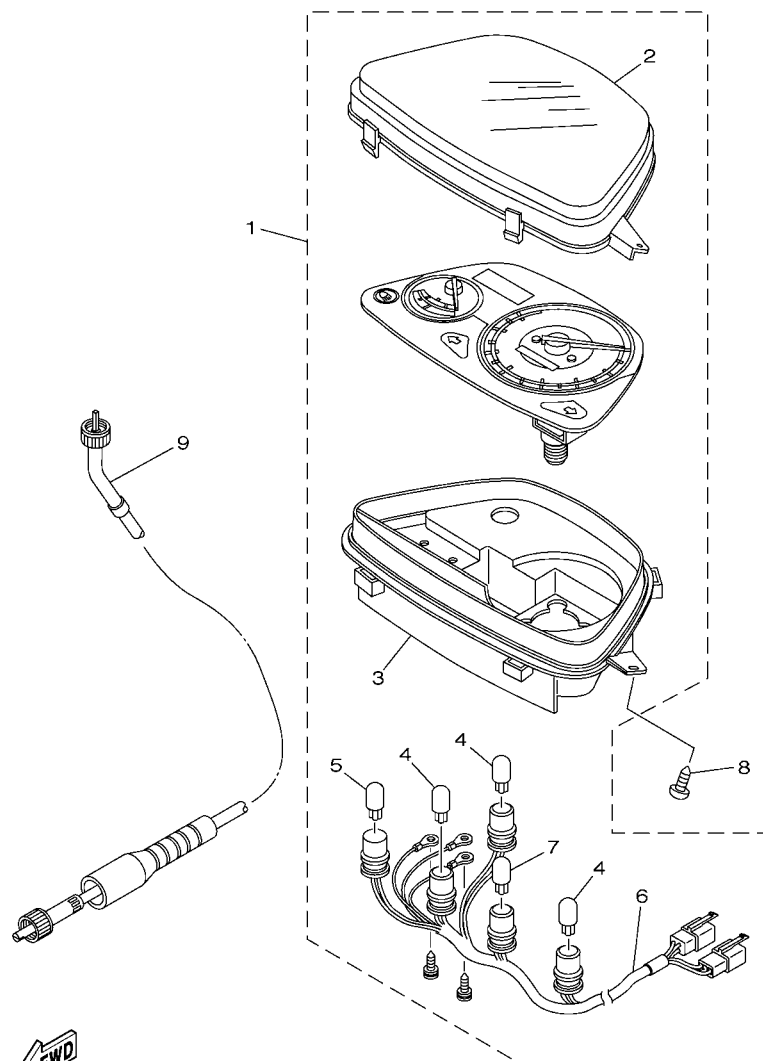


FIG. 31 METER

[illegible]







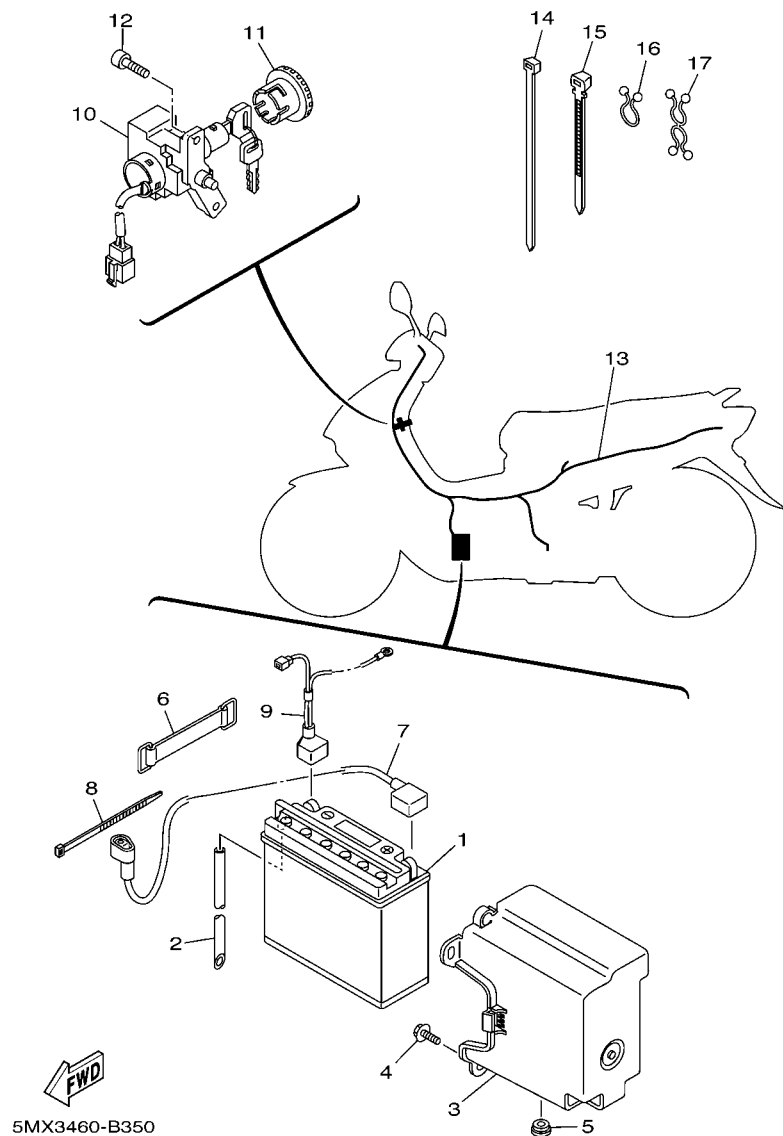


FIG. 35 ELECTRICAL 1

REF. NO.	PART NO.	DESCRIPTION	5MX3				REMARKS
1	5MX-H2110-00	BATTERY ASSY (YUASA YB7B-B)	1				
2	90445-08810	HOSE	1				
3	5MX-H212B-00	BOX, BATTERY 1	1				
4	90119-06044	BOLT, WITH WASHER	2				
5	90480-13867	GROMMET	1				
6	5MX-H2131-00	BAND, BATTERY	1				
7	5MX-H2115-01	WIRE, PLUS LEAD	1				
8	3RS-H3936-00	BAND, SWITCH CORD	1				
9	5LW-H2116-00	WIRE, MINUS LEAD	1				
10	5LW-H2501-00	MAIN SWITCH STEERING LOCK	1				
11	5MX-H2552-00	CAP, SWITCH	1				
12	91317-06014	BOLT	2				
13	5MX-H2590-00	WIRE HARNESS ASSY	1				
14	90465-13152	CLAMP	2				
15	90464-22800	CLAMP	1				
16	90464-16039	CLAMP	1				
17	90464-14134	CLAMP	1				





NUMERICAL INDEX

PART NO.	REF. NO.	PART NO.	REF. NO.	PART NO.	REF. NO.	PART NO.	REF. NO.	PART NO.	REF. NO.	PART NO.	REF. NO.
5LW-11133-10	1 - 2	5LW-16611-00	13 - 7	5LW-E1638-00	2 - 10	5MX-E4901-00	8 - 1	5LW-E7620-00	13 - 11	5MX-F3110-00	19 - 4
5LW-11134-10	1 - 3	5HK-16623-00	13 - 25	5LW-E1651-00	2 - 5	5LW-E4987-00	1 - 25	5LW-E7641-00	13 - 18	5LM-F3111-00	19 - 12
5LW-11391-00	10 - 20	4KN-16626-00	13 - 27	5LW-E2111-00	3 - 1	5LW-E5113-00	10 - 31	5MX-F1110-00	15 - 1	5MX-F3126-00	19 - 2
5LW-11681-00	2 - 3	3YJ-16629-00	13 - 26	5LW-E2121-00	3 - 2	5LW-E5150-04	10 - 1	5MX-F117M-00	15 - 17	5MX-F3136-00	19 - 3
5LW-12113-00	3 - 5	3YJ-16631-00	13 - 24	4CW-E2157-00	4 - 15	5LW-E5191-00	11 - 9	5MX-F1410-00	15 - 2	5LM-F313B-00	28 - 24
5LW-12116-00	3 - 4	5LW-17623-00	13 - 14	5LW-E2170-01	4 - 1	5MX-E5315-00	11 - 26	5MX-F1459-00	15 - 9	5MX-F3141-00	19 - 11
33M-12117-00	3 - 7	5LW-17632-00	13 - 13	5LW-E2176-00	4 - 3	5MX-E5316-00	11 - 34	5LW-F1511-00-33	16 - 1	5LM-F3144-00	19 - 10
1AA-12118-00	3 - 6	5LW-17653-00	13 - 15	5LW-E2210-00	4 - 9	5LW-E5326-00	11 - 37	5LW-F1511-00-P0	16 - 1	3AY-F3145-00	19 - 14
33M-12119-00	3 - 3	5LW-17660-00	13 - 30	5LW-E2213-00	4 - 10	5LW-E5333-00	11 - 32	5LW-F1511-00-P5	16 - 1	2JG-F3147-00	19 - 13
22F-12151-00	3 - 8	24G-17664-00	13 - 34	5LW-E2611-00	6 - 13	5LW-E5335-00	11 - 20	4ST-F1518-00	16 - 4	5LM-F3152-00	19 - 7
22F-12156-00	3 - 11	5LW-17670-00	13 - 31	5LW-E2631-00	6 - 16	5LW-E5351-00	5 - 9	5MX-F153E-10	17 - 26	1T8-F3156-00	19 - 15
22F-12159-00	3 - 9	3XG-17684-00	13 - 36	5LW-E2651-00	6 - 1	5LW-E5362-00	10 - 32	5MX-F153E-20	17 - 26	2JG-F3157-00	19 - 6
5LW-12231-00	4 - 7	5G3-21481-00	15 - 3	5LW-E2652-00	6 - 3	5LW-E5363-00	10 - 23	5LW-F1552-10	28 - 19	509-F3158-L0	19 - 8
5LW-12241-00	4 - 8	164-22216-00	10 - 3	5LW-E2653-00	6 - 4	5LW-E5371-01	10 - 5	5MX-F3170-00	16 - 5	5MX-F3170-00	19 - 5
5LW-13595-00	7 - 2		18 - 6	5LW-E2658-00	6 - 2		11 - 5	5LW-F1611-00	16 - 7	278-F3181-50	19 - 9
5LW-14103-00	8 - 22	156-23411-00	19 - 18	5LW-E2659-00	6 - 6	5LW-E5373-01	10 - 6	5MX-F1691-00	21 - 22	5MX-F3340-00	19 - 17
5LW-14105-00	8 - 25	22F-23411-01	19 - 22	5LW-E2668-00	6 - 7	5MX-E5379-00	11 - 27	5LW-F1711-00-33	17 - 1	5LM-F3346-00	19 - 16
5LW-1410A-00	8 - 16	156-23412-00	19 - 19	5LW-E3185-00	1 - 10	5LW-E5404-00	11 - 23	5LW-F1711-00-P0	17 - 1	3XA-F3416-00	19 - 24
5LW-14112-00	8 - 38	22F-23412-01	19 - 21	5MX-E3300-10	5 - 1	5LW-E5407-01	11 - 15	5LW-F1711-00-P5	17 - 1	5LW-F4110-00	20 - 1
5LW-14141-13	8 - 31	5TL-2341E-00	19 - 20	5LW-E3324-00	2 - 8	5LW-E5408-00	11 - 24	5LW-F171E-00-33	17 - 18	5LW-F414A-00	20 - 13
5LW-14142-17	8 - 29	5TL-2341E-10	19 - 23	5LW-E3325-00	5 - 6	5LW-E5411-00	11 - 1	5LW-F171E-00-P0	17 - 18	5MX-F4311-00	20 - 3
3UH-14146-00	8 - 28	5LW-24411-00	8 - 37	5LW-E3411-00	5 - 10	5LW-E5413-00	11 - 36	5LW-F171E-00-P5	17 - 18	5MX-F4312-00	20 - 4
5HK-14147-00	8 - 9	4SV-24453-00	8 - 12	5LW-E3416-00	10 - 19	5LW-E5417-00	10 - 11	5LW-F1721-00-33	17 - 5	4TT-F4500-00	20 - 8
3G2-1414A-71	8 - 5	5LW-24780-00	21 - 12	5MX-E3474-00	7 - 6	5LW-E5421-00	10 - 25	5LW-F1721-00-P0	17 - 5	4YY-F4610-00	20 - 11
5LW-14150-00	8 - 30	5LW-25190-00	22 - 14	5LW-E3475-00	5 - 7	5LW-E5451-00	11 - 2	5LW-F1721-00-P5	17 - 5	4YY-F4612-00	20 - 12
353-14186-00	8 - 10	5LW-25351-00	24 - 13	5MX-E3556-00	7 - 3	5LW-E5453-00	10 - 14	5LW-F1731-00-33	17 - 10	5MX-F470F-01	21 - 2
12R-14191-00	8 - 15	5JW-25914-00	23 - 6	5LW-E3569-00	6 - 15	5LW-E5461-00	10 - 26	5LW-F1731-00-P0	17 - 10	5MX-F4726-00	21 - 6
4JG-14261-00	8 - 27	4TT-25919-00	23 - 9	5MX-E3575-00	7 - 18	5LW-E5471-00	11 - 16	5LW-F1731-00-P5	17 - 10	5MX-F4728-00	21 - 3
5LW-14261-00	8 - 35	4TT-25937-00	23 - 7	5LW-E3585-00	7 - 1	5LW-E5472-00	11 - 17	5LW-F173B-00	17 - 20	5MX-F4730-01	21 - 1
5HK-14275-00	8 - 18	5MX-27121-00	10 - 2	5LW-E3769-00	10 - 33	5LW-E5473-00	11 - 19	5MX-F173E-00	17 - 22	5LW-F473R-10	21 - 16
5AP-14280-00	8 - 17	1YT-84314-00	32 - 4	5LW-E4411-00	7 - 7	5LW-E5475-00	11 - 21	5MX-F173E-10	17 - 22	5MX-F4747-00	21 - 20
5HK-14349-00	8 - 26	5LW-E1102-00	1 - 1	5LW-E4412-00	7 - 8	5MX-E5491-00	11 - 35	5MX-F173E-20	17 - 22	5MX-F475M-00	21 - 17
583-14561-00	8 - 4	5LW-E111F-00	4 - 12	5LW-E4417-00	7 - 17	5LW-E5492-00	11 - 25	5MX-F173F-00	17 - 23	5LW-F4773-00-35	21 - 14
5LW-14589-00	8 - 34	5LW-E1145-00	4 - 4	5LW-E4435-00	7 - 14	5LW-E5494-00	11 - 39	5MX-F173F-10	17 - 23	5LW-F478E-00	21 - 9
4FU-14714-01	9 - 18	5LW-E1155-00	1 - 11	4ST-E443E-00	11 - 6	5MX-E5495-00	11 - 28	5MX-F173F-20	17 - 23	5MX-F5104-00	22 - 5
5LW-1490J-00	8 - 2	5LW-E1165-00	1 - 9	5LW-E443E-00	7 - 15	5LW-E5524-02	12 - 1	5LW-F1741-00-33	17 - 14	4NS-F5111-00-35	22 - 1
5LW-14919-00	8 - 32	5LW-E1181-00	1 - 19	5LW-E4449-00	7 - 13	5LW-E5532-00	12 - 9	5LW-F1741-00-P0	17 - 14	4ST-F5116-01	22 - 2
5LW-14919-10	8 - 33	5LW-E1185-00	1 - 8	5LW-E4451-00	7 - 10	5LW-E5538-00	12 - 3	5LW-F1741-00-P5	17 - 14	5MX-F5181-00	15 - 11
5AP-14940-00	8 - 19	4ST-E1186-00	1 - 14	5LW-E4452-00	7 - 11	5LW-E5570-10	12 - 5	5LW-F174B-00	17 - 21	3AY-F5181-01	22 - 11
5HK-14985-00	8 - 3	5LW-E1310-00	1 - 23	5LW-E4453-00	7 - 12	5MX-E5620-00	12 - 19	5MX-F174G-00	17 - 24	5MX-F5304-00	24 - 2
5LW-14994-00	8 - 39	5MX-E1351-00	1 - 24	5LW-E4610-10	9 - 1	5LW-E5645-00	12 - 11	5MX-F174G-10	17 - 24	5LW-F5311-00	24 - 1
5LW-15479-00	11 - 22	5LW-E1400-00	2 - 1	5MX-E4613-00	9 - 15	5LW-E5650-00	12 - 6	5MX-F174H-00	17 - 25	5LW-F5326-01	24 - 7
5LW-15521-00	12 - 7	5LW-E1603-00	2 - 13	5MX-E4628-10	9 - 9	5LW-E5670-00	12 - 21	5MX-F174H-10	17 - 25	5MX-F533A-00	24 - 16
5LW-15601-01	12 - 13	5LW-E1605-00	2 - 13	5MX-E4710-10	9 - 2	5LW-E6111-00	13 - 1	5MX-F176E-00	17 - 6	5LW-F5355-00	24 - 15
5LW-15657-00	13 - 21	5LW-E1607-00	2 - 13	5MX-E4718-00	9 - 3	5LW-E7211-00	14 - 7	5MX-F2123-00	10 - 4	4US-F580U-00	23 - 3
5LW-15659-00	11 - 8	5MX-E1631-00	2 - 10	5LW-E4728-00	9 - 7	5LW-F2410-00	14 - 1	5LW-F2171-10-35	18 - 1	4NS-F582U-00	23 - 1
5LW-15673-00	12 - 22	5LW-E1633-00	2 - 11	5MX-E4766-00	9 - 6	5LW-E7421-00	14 - 6	5MX-F2210-02	18 - 8	5LW-F583T-01	26 - 4
3YJ-16523-00	13 - 28	5LW-E1636-00	2 - 10	5MX-E4799-00	9 - 12	5LW-E7611-01	13 - 19	5MX-F3100-00	19 - 1	5LW-F5852-00	26 - 8

NUMERICAL INDEX

PART NO.	REF. NO.	PART NO.	REF. NO.	PART NO.	REF. NO.	PART NO.	REF. NO.	PART NO.	REF. NO.	PART NO.	REF. NO.
4TT-F5854-00	26 - 7	5MX-F8373-00	28 - 10	4TT-H3922-00	26 - 12	90149-06011	20 - 9	90208-12050	13 - 22	91317-06020	1 - 13
5LW-F585B-00	26 - 17	5LW-F8385-10	28 - 12	3RS-H3936-00	35 - 8	90153-06029	1 - 6	90208-15001	14 - 5		10 - 28
56A-F5867-00	26 - 10	5MX-F8391-00	28 - 25	5MX-H3972-00	34 - 1	90153-06038	12 - 20	90208-21002	14 - 8		29 - 3
5G2-F5868-00	26 - 6	5MX-F8391-10	28 - 25	5LW-H3976-00	34 - 4	90157-10049	23 - 11	90214-14002	13 - 20	91317-06035	7 - 19
5LW-F5872-00	26 - 1	5MX-F8391-20	28 - 25	4ST-H3980-00	34 - 10	90159-06033	28 - 18	90241-10015	21 - 8		10 - 29
5MX-F5875-00	19 - 26	5MX-F8392-00	28 - 26	5LW-H3980-00	26 - 15	90159-06067	17 - 19	90249-06220	27 - 26	91810-14001	10 - 27
5MX-F5876-00	19 - 27	5MX-F8392-10	28 - 26	5LW-H4121-00	32 - 9	90159-06178	17 - 4	90249-10002	27 - 2	92902-04100	8 - 14
5MX-F5887-00	19 - 29	5MX-F8392-20	28 - 26	5LW-H4122-00	32 - 11	90159-06181	17 - 3	90249-12008	25 - 23	92902-05100	8 - 8
5LW-F6110-10	25 - 1	5MX-F839H-00	28 - 29	5LW-H4195-00	32 - 8		28 - 6	90280-03017	2 - 9	92903-06200	9 - 5
5LW-F6143-00-33	25 - 4	5MX-F839H-30	28 - 29	5LW-H4300-00	32 - 1	90163-05005	17 - 13	90340-12808	10 - 34	92903-10200	23 - 12
5LW-F6143-00-P0	25 - 4	5LW-F842N-10	28 - 15	5LW-H4340-00	32 - 6	90170-05302	3 - 10	90340-32820	11 - 3	92907-05200	17 - 12
5LW-F6143-00-P5	25 - 4	5LW-H1410-00	29 - 2	3AY-H454E-00	28 - 22	90170-10317	13 - 8	90380-15800	12 - 15	92907-06200	27 - 27
5LW-F6145-10	25 - 5	5LW-H1450-01	29 - 1	5LW-H4700-00	33 - 1	90176-08026	1 - 17	90387-067V1	6 - 5	92907-06600	6 - 9
4US-F6199-00	25 - 10	5LW-H1800-01	30 - 1	5LW-H4714-00	33 - 2	90179-06411	25 - 22	90387-06818	28 - 23		28 - 3
	28 - 16	3KW-H1801-00	30 - 2	5LW-H4721-00	33 - 4	90179-12248	29 - 6	90387-08754	15 - 6		30 - 7
5LW-F6240-00	25 - 11	3UH-H1828-01	30 - 4	5LW-H4743-00	33 - 9	90179-25033	19 - 25	90387-10277	22 - 10		36 - 8
5LW-F6241-00	25 - 12	5MX-H1940-00	36 - 9	4XC-H5111-00	16 - 11	90179-28415	13 - 37	90387-15805	18 - 5	92907-08200	36 - 17
5MX-F6280-00	25 - 13	5BP-H1960-00	36 - 6	5LW-H5540-00	36 - 1	90183-05042	16 - 10	90387-16009	13 - 16	93101-21170	13 - 12
5MX-F6290-00	25 - 14	5MX-H2110-00	35 - 1	5BP-H5546-00	36 - 2	90183-05807	21 - 21	90401-10159	26 - 2	93102-15801	12 - 18
5LW-F6311-00	25 - 15	5MX-H2115-01	35 - 7	5LW-H5752-00	36 - 14		25 - 6	90430-06014	1 - 7	93102-17467	13 - 6
5LW-F6331-00	25 - 24	5LW-H2116-00	35 - 9	5BP-H5753-00	36 - 15		27 - 10	90430-08119	10 - 22	93102-19800	10 - 12
5LW-F6332-00	26 - 11	5MX-H212B-00	35 - 3	4TT-W0041-00	26 - 5		28 - 8	90445-08810	35 - 2	93102-22004	10 - 18
5LW-F6351-00	25 - 16	4ST-H2131-00	21 - 5	4US-W0045-00	23 - 8		33 - 8	90462-05059	16 - 12	93102-22294	10 - 18
5MX-F637G-00	25 - 17	5MX-H2131-00	35 - 6	4ES-W0047-10	23 - 5	90185-10091	22 - 12	90464-12238	20 - 7	93102-26800	14 - 10
5MX-F7111-00	27 - 1	5LW-H2310-00	36 - 3	51L-W0048-00	23 - 10	90185-10154	25 - 3	90464-14134	35 - 17	93104-33117	13 - 32
4YY-F7114-00	25 - 18	5MX-H2370-00	36 - 5	4TT-W0057-00	23 - 4	90185-14124	24 - 19	90464-16039	35 - 16	93106-20816	22 - 3
5MX-F7114-00	15 - 5	5LW-H2501-00	35 - 10	5DV-W253A-12	24 - 10	90201-06060	13 - 2	90464-22800	35 - 15	93106-28800	18 - 4
5LW-F7254-00	27 - 6	5MX-H2552-00	35 - 11	5LW-WE141-00	2 - 2	90201-06063	7 - 20	90465-13152	35 - 14	93106-28801	18 - 3
5MX-F7311-00	27 - 18	5MX-H2590-00	35 - 13	5LW-WE142-00	2 - 6	90201-06072	16 - 3	90465-13275	21 - 10	93210-06800	13 - 10
5MX-F7321-00	27 - 22	5LW-H2911-00	34 - 6	90101-06278	24 - 18	90201-06431	10 - 30	90467-08075	20 - 6	93210-07802	24 - 9
5MX-F7414-00	27 - 17	5LW-H3312-00	32 - 3	90101-10776	18 - 10	90201-077F5	5 - 4	90467-09006	1 - 26	93210-09800	1 - 4
5MX-F7430-10	27 - 24	5LW-H3313-00	32 - 10	90105-06069	19 - 28	90201-08088	11 - 31		20 - 5	93210-108H4	24 - 14
5MX-F7433-00	27 - 25	5LW-H3322-00	32 - 2	90105-08121	18 - 9	90201-08609	1 - 16	90467-11106	11 - 7	93210-148H8	10 - 24
5MX-F7440-00	27 - 31	5LW-H3331-00	32 - 5	90105-10036	25 - 2	90201-10018	12 - 8	90467-12800	7 - 16	93210-15862	4 - 14
5MX-F7444-00	27 - 32		33 - 3	90109-05003	36 - 16	90201-10118	26 - 3	90480-01558	15 - 16	93210-25552	7 - 4
5MX-F7445-00	27 - 29	5LW-H3332-00	33 - 6	90109-063F1	21 - 18	90201-10119	27 - 3	90480-13428	33 - 10	93210-26668	30 - 5
5MX-F7446-00	27 - 36	5LW-H3342-00	33 - 5	90109-06577	26 - 13	90201-101J1	22 - 13	90480-13867	35 - 5	93210-29800	5 - 12
5LW-F7481-10	27 - 7	3WE-H3350-00	36 - 11	90109-06799	34 - 8	90201-12172	10 - 35	90501-16003	25 - 21	93210-328G3	11 - 4
5MX-F7483-00	27 - 15	3WE-H3371-00	36 - 12	90109-08034	27 - 19	90201-12688	15 - 12	90501-16004	5 - 11	93210-384A6	13 - 33
5MX-F7484-00	27 - 16	5LW-H3509-00	31 - 6	90109-084F7	23 - 2		29 - 5	90501-43002	13 - 35	93210-448G4	1 - 15
5LW-F7488-10	27 - 11	5MX-H3510-00	31 - 1	90111-06802	9 - 8	90201-15008	14 - 4	90506-12001	24 - 11	93210-55669	30 - 3
5MX-F8100-00	15 - 18	5LW-H3511-00	31 - 2	90116-08806	1 - 5	90201-154E8	12 - 16	90506-15001	24 - 12	93210-71462	1 - 12
5LW-F8257-10	28 - 9	5LW-H3517-00	31 - 7	90119-06018	16 - 6	90201-16008	13 - 17	90506-20514	27 - 21	93211-07800	10 - 13
5LW-F8311-00-33	28 - 1	5BU-H3518-00	31 - 4	90119-06044	16 - 8	90201-164J0	12 - 4	90506-35002	27 - 5	93300-63813	13 - 9
5LW-F8311-00-P0	28 - 1	5LW-H3518-00	31 - 5		27 - 9	90201-20276	24 - 20	90508-32768	12 - 14	93306-00210	4 - 2
5LW-F8311-00-P6	28 - 1	5LW-H353F-00	31 - 3		28 - 13	90202-05193	20 - 10	91317-06012	4 - 13	93306-003X4	15 - 10
5LW-F8312-10	28 - 5	5MX-H3550-00	31 - 9		35 - 4	90206-14093	24 - 17	91317-06014	35 - 12	93306-00443	14 - 9
5MX-F8356-00	15 - 14	5LW-H3912-00	34 - 7	90119-06054	11 - 33	90208-07052	5 - 2	91317-06016	4 - 11	93306-20324	13 - 5

NUMERICAL INDEX

PART NO.	REF. NO.	PART NO.	REF. NO.	PART NO.	REF. NO.	PART NO.	REF. NO.	PART NO.	REF. NO.	PART NO.	REF. NO.
93306-20324	14 - 12	95707-08500	9 - 16	98507-06016	36 - 7						
93306-300Y6	22 - 4	95707-10500	18 - 11	98507-06018	36 - 4						
93306-30101	14 - 2		24 - 8	98507-06020	6 - 8						
93306-302X4	18 - 2	95807-06010	16 - 2	98507-06025	6 - 11						
93306-37211	2 - 7		36 - 13		28 - 2						
93310-450Y9	12 - 2	95807-06012	20 - 2	98507-06040	25 - 19						
93310-52809	2 - 4	95807-06016	21 - 13	9850M-05030	34 - 2						
93311-315Y6	14 - 3	95807-06020	21 - 15	9850M-05040	34 - 3						
93410-20070	14 - 11	95807-06025	19 - 30	9850M-05050	34 - 5						
93450-16068	2 - 12	95807-08016	27 - 30	9870M-04012	26 - 9						
93602-11144	5 - 3	95807-08050	15 - 7	98907-06010	11 - 10						
94107-16801	22 - 6	95807-10040	27 - 23	99001-05600	5 - 5						
94108-16801	24 - 3	95817-06050	7 - 5		27 - 28						
94207-16801	22 - 7	95817-08016	4 - 5	99001-06600	13 - 29						
94208-16801	24 - 4		10 - 21	99001-08600	27 - 4						
94307-16801	22 - 8	95817-08035	9 - 19	99009-15400	12 - 17						
	24 - 5	95817-08040	18 - 7	99009-17400	13 - 4						
94414-16801	22 - 9	95817-10060	9 - 17	99234-00100	28 - 27						
94416-16801	24 - 6	95827-08012	15 - 15	99236-00100	28 - 27						
94568-72090	4 - 6	97007-06025	30 - 6	99480-05010	10 - 15						
94700-00833	1 - 18	97027-06010	9 - 4	99530-10114	1 - 20						
94700-00846	1 - 18	97080-06008	9 - 11		10 - 7						
95027-06008	36 - 10	9760L-04212	26 - 16		11 - 11						
95027-06010	13 - 3	97707-50012	17 - 2								
95027-06012	6 - 14		25 - 8								
	12 - 10	97707-50014	16 - 9								
95027-06016	10 - 17		17 - 11								
	11 - 38		21 - 19								
95027-06020	11 - 18		27 - 8								
95027-06025	11 - 12		28 - 4								
	34 - 11	97707-50016	25 - 7								
95027-06035	11 - 13		31 - 8								
95027-06050	10 - 10		32 - 12								
95027-06060	10 - 8	97707-60530	6 - 10								
	11 - 14	9770N-40616	32 - 7								
95027-06070	10 - 16		33 - 7								
95027-06100	1 - 22	9770N-50525	7 - 9								
	10 - 9	98502-04010	8 - 23								
95027-08040	11 - 29	98502-04014	8 - 20								
95027-08080	11 - 30	98502-04018	8 - 13								
95307-08700	27 - 20	98502-05008	8 - 6								
95307-12700	13 - 23	98502-05010	8 - 36								
95607-06100	34 - 9	98502-05012	8 - 7								
95607-08200	15 - 8	98507-04008	8 - 11								
95607-10200	15 - 4	98507-05010	21 - 11								
95607-12200	15 - 13	98507-05020	5 - 8								
9560M-06100	26 - 14	98507-06014	25 - 20								
95707-06500	21 - 4	98507-06016	29 - 4								